

Product datasheet for **TA331516**

MAP4K5 Rabbit Polyclonal Antibody

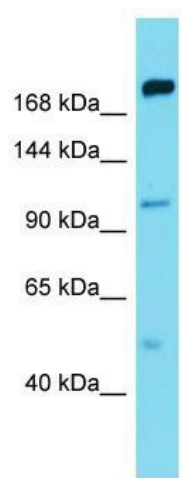
Product data:

Product Type:	Primary Antibodies
Applications:	WB
Recommended Dilution:	WB
Reactivity:	Human
Host:	Rabbit
Isotype:	IgG
Clonality:	Polyclonal
Immunogen:	The immunogen for Anti-MAP4K5 Antibody is: synthetic peptide directed towards the C-terminal region of Human MAP4K5. Synthetic peptide located within the following region: KSDEVTQEISDETRVFRLLGSDRVVLESRPTENPTAHSNLYILAGHENS
Formulation:	Liquid. Purified antibody supplied in 1x PBS buffer with 0.09% (w/v) sodium azide and 2% sucrose. <i>Note that this product is shipped as lyophilized powder to China customers.</i>
Conjugation:	Unconjugated
Storage:	Store at -20°C as received.
Stability:	Stable for 12 months from date of receipt.
Predicted Protein Size:	95 kDa
Gene Name:	mitogen-activated protein kinase kinase kinase kinase 5
Database Link:	NP_942089 Entrez Gene 11183 Human Q9Y4K4
Background:	MAP4K5 may play a role in the response to environmental stress. Appears to act upstream of the JUN N-terminal pathway.
Synonyms:	GCKR; KHS; KHS1; MAPK5
Note:	Immunogen sequence homology: Dog: 100%; Pig: 100%; Rat: 100%; Horse: 100%; Human: 100%; Bovine: 100%; Rabbit: 100%; Guinea pig: 100%; Mouse: 93%; Zebrafish: 93%
Protein Families:	Druggable Genome, Protein Kinase



[View online »](#)

Product images:



Host: Rabbit; Target Name: MAP4K5; Sample
Tissue: Thymus Tumor lysates; Antibody Dilution:
1.0ug/ml