

Product datasheet for **TA331515**

TBC1D9B Rabbit Polyclonal Antibody

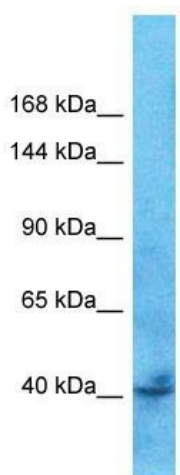
Product data:

Product Type:	Primary Antibodies
Applications:	WB
Recommended Dilution:	WB
Reactivity:	Human
Host:	Rabbit
Isotype:	IgG
Clonality:	Polyclonal
Immunogen:	The immunogen for Anti-TBC1D9B Antibody is: synthetic peptide directed towards the C-terminal region of Human TBC1D9B. Synthetic peptide located within the following region: SFEQILASILTESVLVNFPEKRVDIGLQKQKVERQFSTASDHEQPGV
Formulation:	Liquid. Purified antibody supplied in 1x PBS buffer with 0.09% (w/v) sodium azide and 2% sucrose. <i>Note that this product is shipped as lyophilized powder to China customers.</i>
Conjugation:	Unconjugated
Storage:	Store at -20°C as received.
Stability:	Stable for 12 months from date of receipt.
Predicted Protein Size:	43 kDa
Gene Name:	TBC1 domain family member 9B
Database Link:	NP_942568 Entrez Gene 23061 Human Q66K14
Background:	The function of this protein remains unknown.
Synonyms:	GRAMD9B
Note:	Immunogen sequence homology: Pig: 100%; Human: 100%; Guinea pig: 100%; Rat: 93%; Horse: 93%; Mouse: 93%; Rabbit: 93%; Dog: 86%; Bovine: 79%



[View online »](#)

Product images:



Host: Rabbit
Target Name: TBC1D9B
Sample Tissue: ACHN Cell Lysate
Antibody Dilution: 1.0 μ g/ml

Host: Rabbit; Target Name: TBC1D9B; Sample
Tissue: ACHN Whole Cell lysates; Antibody
Dilution: 1.0ug/ml