

Product datasheet for **TA331514**

TBC1D8B Rabbit Polyclonal Antibody

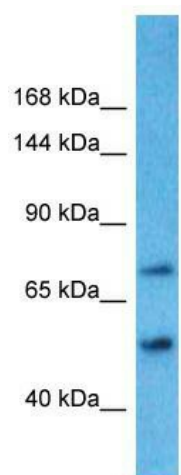
Product data:

| | |
|-------------------------|---|
| Product Type: | Primary Antibodies |
| Applications: | WB |
| Recommended Dilution: | WB |
| Reactivity: | Human |
| Host: | Rabbit |
| Isotype: | IgG |
| Clonality: | Polyclonal |
| Immunogen: | The immunogen for Anti-TBC1D8B Antibody is: synthetic peptide directed towards the N-terminal region of Human TBC1D8B. Synthetic peptide located within the following region: FDSNEDITNFVQGKIRGLIAEEGKHCFKEDDPEKFREALLKFEKCFGLP |
| Formulation: | Liquid. Purified antibody supplied in 1x PBS buffer with 0.09% (w/v) sodium azide and 2% sucrose. <i>Note that this product is shipped as lyophilized powder to China customers.</i> |
| Conjugation: | Unconjugated |
| Storage: | Store at -20°C as received. |
| Stability: | Stable for 12 months from date of receipt. |
| Predicted Protein Size: | 72 kDa |
| Gene Name: | TBC1 domain family member 8B |
| Database Link: | NP_942582 Entrez Gene 54885 Human Q0IIM8 |
| Background: | TBC1D8B may act as a GTPase-activating protein for Rab family protein(s). |
| Synonyms: | GRAMD8B |
| Note: | Immunogen sequence homology: Human: 100%; Pig: 93%; Rat: 93%; Bovine: 93%; Guinea pig: 93%; Dog: 86%; Mouse: 86%; Rabbit: 86% |



[View online »](#)

Product images:



Host: Rabbit; Target Name: TBC1D8B; Sample
Tissue: Placenta lysates; Antibody Dilution:
1.0ug/ml