

## Product datasheet for TA331513

### KCTD1 Rabbit Polyclonal Antibody

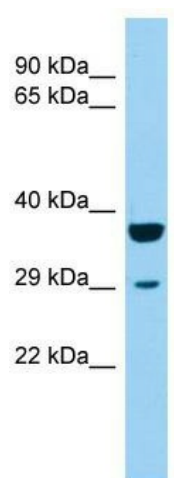
#### Product data:

Product Type:	Primary Antibodies
Applications:	WB
Recommended Dilution:	WB
Reactivity:	Human
Host:	Rabbit
Isotype:	IgG
Clonality:	Polyclonal
Immunogen:	The immunogen for Anti-KCTD1 Antibody is: synthetic peptide directed towards the middle region of Human KCTD1. Synthetic peptide located within the following region: EEAKYFQLQPMLLEMERWKQDRETGRFSRPCECLVVRVAPDLGERITLSG
Formulation:	Liquid. Purified antibody supplied in 1x PBS buffer with 0.09% (w/v) sodium azide and 2% sucrose. <i>Note that this product is shipped as lyophilized powder to China customers.</i>
Storage:	Store at -20°C as received.
Stability:	Stable for 12 months from date of receipt.
Predicted Protein Size:	29 kDa
Gene Name:	potassium channel tetramerization domain containing 1
Database Link:	<a href="#">NP_945342</a> <a href="#">Entrez Gene 284252</a> Human
Background:	KCTD1 may repress the transcriptional activity of AP-2 family members, including TFAP2A, TFAP2B and TFAP2C to various extent.
Synonyms:	C18orf5; SENS
Note:	Immunogen sequence homology: Dog: 100%; Horse: 100%; Human: 100%; Mouse: 100%; Pig: 93%; Rat: 93%; Goat: 93%; Bovine: 93%; Guinea pig: 93%; Rabbit: 86%
Protein Families:	Ion Channels: Other



[View online »](#)

## Product images:



Host: Rabbit; Target Name: KCTD1; Sample  
Tissue: 721\_B Whole Cell lysates; Antibody  
Dilution: 1.0ug/ml