

## Product datasheet for TA331512

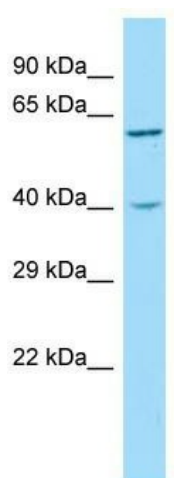
### SYT10 Rabbit Polyclonal Antibody

#### Product data:

|                         |   |
|-------------------------|---|
| Product Type:           | Primary Antibodies  |
| Applications:           | WB  |
| Recommended Dilution:   | WB  |
| Reactivity:             | Human   |
| Host:                   | Rabbit  |
| Isotype:                | IgG   |
| Clonality:              | Polyclonal  |
| Immunogen:              | The immunogen for Anti-SYT10 Antibody is: synthetic peptide directed towards the middle region of Human SYT10. Synthetic peptide located within the following region:<br>RGETTTSIGRIKPELYKQKSVDSEGNQNEDVKICGKLNFTLQYDYENELL                               |
| Formulation:            | Liquid. Purified antibody supplied in 1x PBS buffer with 0.09% (w/v) sodium azide and 2% sucrose.   |
| Conjugation:            | Unconjugated  |
| Storage:                | Store at -20°C as received.   |
| Stability:              | Stable for 12 months from date of receipt.  |
| Predicted Protein Size: | 58 kDa  |
| Gene Name:              | synaptotagmin 10  |
| Database Link:          | <a href="#">NP_945343</a><br><a href="#">Entrez Gene 341359 Human</a><br><a href="#">Q6XYQ8</a>   |
| Background:             | SYT10 may be involved in Ca <sup>2+</sup> -dependent exocytosis of secretory vesicles through Ca <sup>2+</sup> and phospholipid binding to the C2 domain or may serve as Ca <sup>2+</sup> sensors in the process of vesicular trafficking and exocytosis. |
| Synonyms:               | MGC119436; MGC119437  |
| Note:                   | Immunogen sequence homology: Human: 100%; Dog: 86%; Pig: 86%; Rat: 86%; Horse: 86%; Rabbit: 86%; Guinea pig: 86%; Mouse: 79%; Bovine: 79%   |
| Protein Families:       | Secreted Protein, Transmembrane   |



[View online »](#)

**Product images:**

Host: Rabbit; Target Name: SYT10; Sample  
Tissue: Jurkat Whole Cell lysates; Antibody  
Dilution: 1.0ug/ml