

Product datasheet for **TA331510**

COLEC11 Rabbit Polyclonal Antibody

Product data:

Product Type:	Primary Antibodies
Applications:	WB
Recommended Dilution:	WB
Reactivity:	Human
Host:	Rabbit
Isotype:	IgG
Clonality:	Polyclonal
Immunogen:	The immunogen for Anti-COLEC11 Antibody is: synthetic peptide directed towards the N-terminal region of Human COLEC11. Synthetic peptide located within the following region: RETKAPPDGLEESAPREKKQSQPVVTASDISKRKCTSSFVEMGSQGDMDG
Formulation:	Liquid. Purified antibody supplied in 1x PBS buffer with 0.09% (w/v) sodium azide and 2% sucrose. <i>Note that this product is shipped as lyophilized powder to China customers.</i>
Conjugation:	Unconjugated
Storage:	Store at -20°C as received.
Stability:	Stable for 12 months from date of receipt.
Predicted Protein Size:	29 kDa
Gene Name:	collectin subfamily member 11
Database Link:	NP_954705 Entrez Gene 78989 Human Q9BWP8
Background:	This gene encodes a member of the collectin family of C-type lectins that possess collagen-like sequences and carbohydrate recognition domains. Collectins are secreted proteins that play important roles in the innate immune system by binding to carbohydrate antigens on microorganisms, facilitating their recognition and removal. The encoded protein binds to multiple sugars with a preference for fucose and mannose. Mutations in this gene are a cause of 3MC syndrome-2. Alternatively spliced transcript variants encoding multiple isoforms have been observed for this gene.

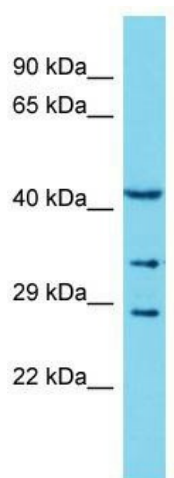


[View online »](#)

Synonyms: 3MC2; CL-K1-I; CL-K1-II; CL-K1-IIa; CL-K1-IIb; CLK1

Note: Immunogen sequence homology: Human: 100%

Product images:



Host: Rabbit; Target Name: COLEC11; Sample
Tissue: THP-1 Whole Cell lysates; Antibody
Dilution: 1.0ug/ml