

Product datasheet for **TA331509**

SH3D20 Rabbit Antibody

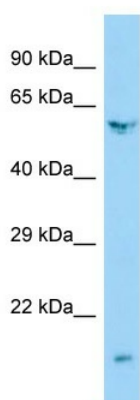
Product data:

Product Type:	Primary Antibodies
Reactivity:	Human
Host:	Rabbit
Isotype:	IgG
Immunogen:	The immunogen for Anti-ARHGAP27 Antibody is: synthetic peptide directed towards the N-terminal region of Human ARHGAP27. Synthetic peptide located within the following region: GVLHRTKTADKGKRLRKKHWSASWTVLEGGVLTFFKDSKTSAAAGGLRQPS
Formulation:	Shipped as lyophilized powder. Purified antibody supplied in 1x PBS buffer with 0.09% (w/v) sodium azide and 2% sucrose.
Conjugation:	Unconjugated
Storage:	Store at -20°C as received.
Stability:	Stable for 12 months from date of receipt.
Predicted Protein Size:	60 kDa
Database Link:	NP_954976 Entrez Gene 201176 Human
Background:	Rho-like small GTPases are involved in many cellular processes, and they are inactive in the GDP-bound state and active in the GTP-bound state. GTPase-activating proteins, such as ARHGAP27, inhibit Rho-like proteins by stimulating their intrinsic GTPase activity.
Synonyms:	CAMGAP1; PP905; SH3D20; SH3P20
Note:	Immunogen sequence homology: Human: 100%; Dog: 93%; Pig: 93%; Rat: 93%; Horse: 93%; Mouse: 93%; Rabbit: 93%; Bovine: 86%



[View online »](#)

Product images:



Host: Rabbit
 Target Name: ARHGAP27
 Sample Type: PANC1 Whole Cell lysates
 Antibody Dilution: 1.0ug/ml