

Product datasheet for **TA331508**

SFT2B (SFT2D2) Rabbit Polyclonal Antibody

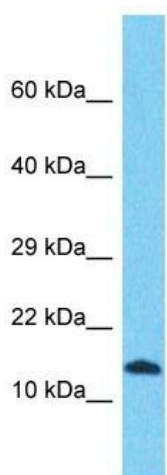
Product data:

Product Type:	Primary Antibodies
Applications:	WB
Recommended Dilution:	WB
Reactivity:	Human
Host:	Rabbit
Isotype:	IgG
Clonality:	Polyclonal
Immunogen:	The immunogen for Anti-SFT2D2 Antibody is: synthetic peptide directed towards the N-terminal region of Human SFT2D2. Synthetic peptide located within the following region: LKKVLSGQDTEDRSGLSEVVEASSLSWSTRIKGFACFAIGILCSLLGTV
Formulation:	Liquid. Purified antibody supplied in 1x PBS buffer with 0.09% (w/v) sodium azide and 2% sucrose. <i>Note that this product is shipped as lyophilized powder to China customers.</i>
Conjugation:	Unconjugated
Storage:	Store at -20°C as received.
Stability:	Stable for 12 months from date of receipt.
Predicted Protein Size:	17 kDa
Gene Name:	SFT2 domain containing 2
Database Link:	NP_955376 Entrez Gene 375035 Human O95562
Background:	SFT2D2 may be involved in fusion of retrograde transport vesicles derived from an endocytic compartment with the Golgi complex.
Synonyms:	dJ747L4.C1.2; UNQ512
Note:	Immunogen sequence homology: Pig: 100%; Rat: 100%; Human: 100%; Mouse: 100%; Rabbit: 100%; Guinea pig: 100%; Bovine: 86%
Protein Families:	Transmembrane



[View online »](#)

Product images:



Host: Rabbit
Target Name: SFT2D2
Sample Tissue: HepG2 Cell Lysate
Antibody Dilution: 1.0 μ g/ml

Host: Rabbit; Target Name: SFT2D2; Sample Tissue: HepG2 Whole Cell lysates; Antibody Dilution: 1.0 μ g/ml