

Product datasheet for **TA331507**

ARHGAP11A Rabbit Polyclonal Antibody

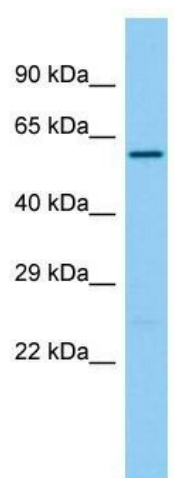
Product data:

Product Type:	Primary Antibodies
Applications:	WB
Recommended Dilution:	WB
Reactivity:	Human
Host:	Rabbit
Isotype:	IgG
Clonality:	Polyclonal
Immunogen:	The immunogen for Anti-ARHGAP11A Antibody is: synthetic peptide directed towards the N-terminal region of Human ARHGAP11A. Synthetic peptide located within the following region: MLGIDGLCATPSLEGFEEGEYETPGEYKRKRQSVGDFVSGALNKFKPNR
Formulation:	Liquid. Purified antibody supplied in 1x PBS buffer with 0.09% (w/v) sodium azide and 2% sucrose. <i>Note that this product is shipped as lyophilized powder to China customers.</i>
Conjugation:	Unconjugated
Storage:	Store at -20°C as received.
Stability:	Stable for 12 months from date of receipt.
Predicted Protein Size:	55 kDa
Gene Name:	Rho GTPase activating protein 11A
Database Link:	NP_955389 Entrez Gene 9824 Human Q6P4F7
Background:	The function of this protein remains unknown.
Synonyms:	GAP (1-12)
Note:	Immunogen sequence homology: Human: 100%; Rat: 93%; Bovine: 93%; Rabbit: 92%; Mouse: 86%; Pig: 85%; Horse: 85%; Guinea pig: 85%; Dog: 77%



[View online »](#)

Product images:



Host: Rabbit; Target Name: ARHGAP11A; Sample
Tissue: Fetal Lung lysates; Antibody Dilution:
1.0ug/ml