

## Product datasheet for **TA331506**

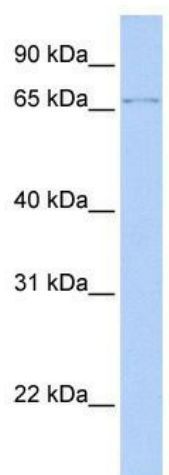
### ZFP64 Rabbit Polyclonal Antibody

#### Product data:

Product Type:	Primary Antibodies
Applications:	WB
Recommended Dilution:	WB
Reactivity:	Human
Host:	Rabbit
Isotype:	IgG
Clonality:	Polyclonal
Immunogen:	The immunogen for Anti-ZFP64 Antibody: synthetic peptide directed towards the N terminal of human ZFP64. Synthetic peptide located within the following region: YLPTESNENQTATVISLPAKSRTKKPTTPPAQKRLNCCYPGCQFKTAYGM
Formulation:	Liquid. Purified antibody supplied in 1x PBS buffer with 0.09% (w/v) sodium azide and 2% sucrose. <i>Note that this product is shipped as lyophilized powder to China customers.</i>
Conjugation:	Unconjugated
Storage:	Store at -20°C as received.
Stability:	Stable for 12 months from date of receipt.
Predicted Protein Size:	72 kDa
Gene Name:	ZFP64 zinc finger protein
Database Link:	<a href="#">NP_955459</a> <a href="#">Entrez Gene 55734 Human</a> <a href="#">Q9NTW7</a>
Background:	ZFP64 belongs to the krueppel C2H2-type zinc-finger protein family. It contains 9 C2H2-type zinc fingers. ZFP64 may be involved in transcriptional regulation.
Synonyms:	ZNF338
Note:	Immunogen sequence homology: Dog: 100%; Pig: 100%; Rat: 100%; Horse: 100%; Human: 100%; Rabbit: 100%; Bovine: 92%; Guinea pig: 92%; Mouse: 85%
Protein Families:	Transcription Factors



[View online »](#)

**Product images:**

WB Suggested Anti-ZFP64 Antibody Titration: 0.2-1 ug/ml; Positive Control: Transfected 293T