

Product datasheet for **TA331503**

FIBIN Rabbit Polyclonal Antibody

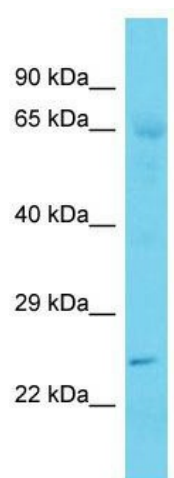
Product data:

Product Type:	Primary Antibodies
Applications:	WB
Recommended Dilution:	WB
Reactivity:	Human
Host:	Rabbit
Isotype:	IgG
Clonality:	Polyclonal
Immunogen:	The immunogen for Anti-FIBIN Antibody is: synthetic peptide directed towards the C-terminal region of Human FIBIN. Synthetic peptide located within the following region: GDAYSNSDKSLTELESKFKQGQEQDSRQESRLNEDFLGMLVHTRSLLKET
Formulation:	Liquid. Purified antibody supplied in 1x PBS buffer with 0.09% (w/v) sodium azide and 2% sucrose. <i>Note that this product is shipped as lyophilized powder to China customers.</i>
Conjugation:	Unconjugated
Storage:	Store at -20°C as received.
Stability:	Stable for 12 months from date of receipt.
Predicted Protein Size:	23 kDa
Gene Name:	fin bud initiation factor homolog (zebrafish)
Database Link:	NP_976249 Entrez Gene 387758 Human Q8TAL6
Background:	The function of this protein remains unknown.
Synonyms:	MGC24932
Note:	Immunogen sequence homology: Pig: 100%; Rat: 100%; Horse: 100%; Human: 100%; Mouse: 100%; Bovine: 100%; Rabbit: 100%; Guinea pig: 92%; Yeast: 77%



[View online »](#)

Product images:



Host: Rabbit; Target Name: FIBIN; Sample Tissue: Fetal Heart lysates; Antibody Dilution: 1.0ug/ml