

Product datasheet for **TA331498**

DPY19L3 Rabbit Polyclonal Antibody

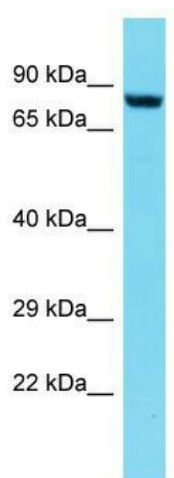
Product data:

Product Type:	Primary Antibodies
Applications:	WB
Recommended Dilution:	WB
Reactivity:	Human
Host:	Rabbit
Isotype:	IgG
Clonality:	Polyclonal
Immunogen:	The immunogen for Anti-DPY19L3 Antibody is: synthetic peptide directed towards the C-terminal region of Human DPY19L3. Synthetic peptide located within the following region: TNHPHYEDSSLRERTRAVYQIYAKRAPEEVHALLRSFGTDYVILEDSICY
Formulation:	Liquid. Purified antibody supplied in 1x PBS buffer with 0.09% (w/v) sodium azide and 2% sucrose.
Conjugation:	Unconjugated
Storage:	Store at -20°C as received.
Stability:	Stable for 12 months from date of receipt.
Predicted Protein Size:	83 kDa
Gene Name:	dpy-19 like 3 (C. elegans)
Database Link:	NP_997208 Entrez Gene 147991 Human Q6ZPD9
Background:	The function of this protein remains unknown.
Synonyms:	DKFZp686J17135; MGC35440
Note:	Immunogen sequence homology: Human: 100%; Pig: 93%; Horse: 93%; Rabbit: 93%; Guinea pig: 93%; Dog: 86%; Rat: 86%; Mouse: 86%; Bovine: 86%; Zebrafish: 85%
Protein Families:	Transmembrane



[View online »](#)

Product images:



Host: Rabbit; Target Name: DPY19L3; Sample
Tissue: Jurkat Whole Cell lysates; Antibody
Dilution: 1.0ug/ml