

Product datasheet for TA331497

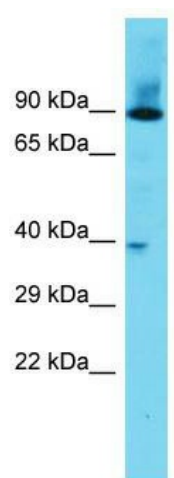
DPY19L3 Rabbit Polyclonal Antibody

Product data:

Product Type:	Primary Antibodies
Applications:	WB
Recommended Dilution:	WB
Reactivity:	Human
Host:	Rabbit
Isotype:	IgG
Clonality:	Polyclonal
Immunogen:	The immunogen for Anti-DPY19L3 Antibody is: synthetic peptide directed towards the N-terminal region of Human DPY19L3. Synthetic peptide located within the following region: QMLQAPTLVQGFGHGLIYDNKTESMKTINLLQRMNIYQEVFLSILYRVLP
Formulation:	Liquid. Purified antibody supplied in 1x PBS buffer with 0.09% (w/v) sodium azide and 2% sucrose.
Conjugation:	Unconjugated
Storage:	Store at -20°C as received.
Stability:	Stable for 12 months from date of receipt.
Predicted Protein Size:	83 kDa
Gene Name:	dpy-19 like 3 (C. elegans)
Database Link:	NP_997208 Entrez Gene 147991 Human Q6ZPD9
Background:	The function of this protein remains unknown.
Synonyms:	DKFZp686j17135; MGC35440
Note:	Immunogen sequence homology: Pig: 100%; Rat: 100%; Human: 100%; Guinea pig: 100%; Dog: 93%; Mouse: 93%; Rabbit: 93%; Bovine: 92%; Horse: 86%
Protein Families:	Transmembrane



[View online »](#)

Product images:

Host: Rabbit; Target Name: DPY19L3; Sample Tissue: Fetal Heart lysates; Antibody Dilution: 1.0ug/ml