

Product datasheet for **TA331496**

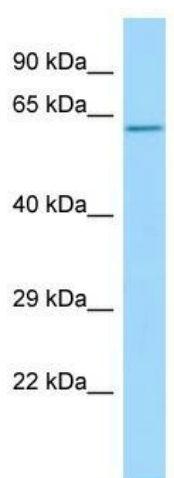
LCTL Rabbit Polyclonal Antibody

Product data:

Product Type:	Primary Antibodies
Applications:	WB
Recommended Dilution:	WB
Reactivity:	Human
Host:	Rabbit
Isotype:	IgG
Clonality:	Polyclonal
Immunogen:	The immunogen for Anti-LCTL Antibody is: synthetic peptide directed towards the C-terminal region of Human LCTL. Synthetic peptide located within the following region: LPVFSLQEKSYIKGTSDFLGLGHFTTRYITERNYPSRQGPSYQNDRDLIE
Formulation:	Liquid. Purified antibody supplied in 1x PBS buffer with 0.09% (w/v) sodium azide and 2% sucrose. <i>Note that this product is shipped as lyophilized powder to China customers.</i>
Conjugation:	Unconjugated
Storage:	Store at -20°C as received.
Stability:	Stable for 12 months from date of receipt.
Predicted Protein Size:	62 kDa
Gene Name:	lactase like
Database Link:	NP_997221 Entrez Gene 197021 Human Q6UWM7
Background:	The function of this protein remains unknown.
Synonyms:	KLG; KLPH
Note:	Immunogen sequence homology: Dog: 100%; Pig: 100%; Horse: 100%; Human: 100%; Rat: 93%; Mouse: 93%; Bovine: 93%; Guinea pig: 86%
Protein Families:	Transmembrane



[View online »](#)

Product images:

Host: Rabbit; Target Name: LCTL; Sample Tissue: MCF7 Whole Cell lysates; Antibody Dilution: 1.0ug/ml