

Product datasheet for **TA331494**

PRRT3 Rabbit Polyclonal Antibody

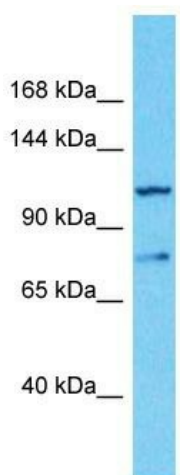
Product data:

Product Type:	Primary Antibodies
Applications:	WB
Recommended Dilution:	WB
Reactivity:	Human
Host:	Rabbit
Isotype:	IgG
Clonality:	Polyclonal
Immunogen:	The immunogen for Anti-PRRT3 Antibody is: synthetic peptide directed towards the C-terminal region of Human PRRT3. Synthetic peptide located within the following region: GALRPRRGSHPKAELDDAGSSLLRGRCSLSDVRVRGPVPQHVVEAPDGA
Formulation:	Liquid. Purified antibody supplied in 1x PBS buffer with 0.09% (w/v) sodium azide and 2% sucrose. <i>Note that this product is shipped as lyophilized powder to China customers.</i>
Conjugation:	Unconjugated
Storage:	Store at -20°C as received.
Stability:	Stable for 12 months from date of receipt.
Predicted Protein Size:	99 kDa
Gene Name:	proline rich transmembrane protein 3
Database Link:	NP_997234 Entrez Gene 285368 Human Q5FWE3
Background:	The function of this protein remains unknown.
Synonyms:	FLJ33674; MGC33990; MGC105134
Note:	Immunogen sequence homology: Human: 100%
Protein Families:	Transmembrane



[View online »](#)

Product images:



Host: Rabbit

Target Name: PRRT3

Sample Tissue: 721_B Cell Lysate

Antibody Dilution: 1.0 μ g/ml

Host: Rabbit; Target Name: PRRT3; Sample Tissue: 721_B Whole Cell lysates; Antibody Dilution: 1.0 μ g/ml