

## Product datasheet for **TA331493**

### POTEB3 Rabbit Polyclonal Antibody

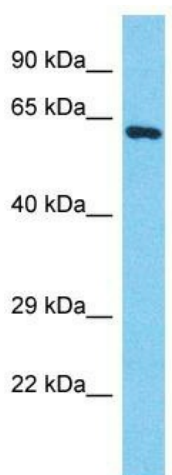
#### Product data:

Product Type:	Primary Antibodies
Applications:	WB
Recommended Dilution:	WB
Reactivity:	Human
Host:	Rabbit
Isotype:	IgG
Clonality:	Polyclonal
Immunogen:	The immunogen for Anti-POTEB Antibody is: synthetic peptide directed towards the C-terminal region of Human POTEB. Synthetic peptide located within the following region: AGNGDDGLIPQRKSRKPENQQFPDTENEYHSDEQNDTQKQLSEEQNTGI
Formulation:	Liquid. Purified antibody supplied in 1x PBS buffer with 0.09% (w/v) sodium azide and 2% sucrose.
Conjugation:	Unconjugated
Storage:	Store at -20°C as received.
Stability:	Stable for 12 months from date of receipt.
Predicted Protein Size:	63 kDa
Gene Name:	POTE ankyrin domain family member B3
Database Link:	<a href="#">NP_997238</a> <a href="#">Entrez Gene 102724631 Human</a> <a href="#">A0JP26</a>
Background:	The function of this protein remains unknown.
Synonyms:	POTE-15; POTEB
Note:	Immunogen sequence homology: Human: 100%; Bovine: 82%



[View online »](#)

## Product images:



Host: Rabbit  
Target Name: POTEB  
Sample Tissue: HepG2 Cell Lysate  
Antibody Dilution: 1.0 $\mu$ g/ml

Host: Rabbit; Target Name: POTEB; Sample  
Tissue: HepG2 Whole Cell lysates; Antibody  
Dilution: 1.0ug/ml