

Product datasheet for **TA331492**

CCDC9B Rabbit Polyclonal Antibody

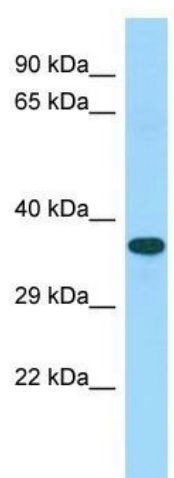
Product data:

Product Type:	Primary Antibodies
Applications:	WB
Recommended Dilution:	WB
Reactivity:	Human
Host:	Rabbit
Isotype:	IgG
Clonality:	Polyclonal
Immunogen:	The immunogen for Anti-C15orf52 Antibody is: synthetic peptide directed towards the C-terminal region of Human C15orf52. Synthetic peptide located within the following region: EPQRGAGLPEPGEDRSKGSGAQQLAPRSRPTRGGSQRSRGTAGVRRRTG
Formulation:	Liquid. Purified antibody supplied in 1x PBS buffer with 0.09% (w/v) sodium azide and 2% sucrose.
Conjugation:	Unconjugated
Storage:	Store at -20°C as received.
Stability:	Stable for 12 months from date of receipt.
Predicted Protein Size:	36 kDa
Gene Name:	chromosome 15 open reading frame 52
Database Link:	NP_997263 Entrez Gene 388115 Human Q6ZUT6
Background:	The function of this protein remains unknown.
Synonyms:	DKFZp686N1468; FLJ43339
Note:	Immunogen sequence homology: Human: 100%; Pig: 86%; Horse: 79%; Bovine: 79%



[View online »](#)

Product images:



Host: Rabbit; Target Name: C15orf52; Sample Tissue: Fetal Heart lysates; Antibody Dilution: 1.0ug/ml