

Product datasheet for **TA331491**

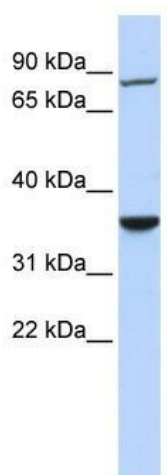
RNF207 Rabbit Polyclonal Antibody

Product data:

Product Type:	Primary Antibodies
Applications:	WB
Recommended Dilution:	WB
Reactivity:	Human
Host:	Rabbit
Isotype:	IgG
Clonality:	Polyclonal
Immunogen:	The immunogen for Anti-RNF207 Antibody: synthetic peptide directed towards the N terminal of human RNF207. Synthetic peptide located within the following region: CLLDCFHDFCAGCLRGRATDGRLTCPLCQHQTVLKGPSGLPPVDRLLQFL
Formulation:	Liquid. Purified antibody supplied in 1x PBS buffer with 0.09% (w/v) sodium azide and 2% sucrose.
Conjugation:	Unconjugated
Storage:	Store at -20°C as received.
Stability:	Stable for 12 months from date of receipt.
Predicted Protein Size:	71 kDa
Gene Name:	ring finger protein 207
Database Link:	NP_997279 Entrez Gene 388591 Human Q6ZRF8
Background:	RNF207 contains 1 B box-type zinc finger and 1 RING-type zinc finger. The function of the RNF207 protein remains unknown.
Synonyms:	C1orf188
Note:	Immunogen sequence homology: Dog: 100%; Pig: 100%; Horse: 100%; Human: 100%; Mouse: 100%; Bovine: 100%; Rabbit: 100%; Rat: 93%



[View online »](#)

Product images:

WB Suggested Anti-RNF207 Antibody Titration:
0.2-1 ug/ml; ELISA Titer: 1: 62500; Positive
Control: Jurkat cell lysate