

Product datasheet for **TA331490**

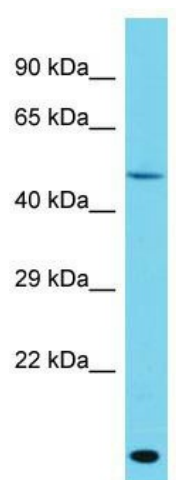
GFRAL Rabbit Polyclonal Antibody

Product data:

Product Type:	Primary Antibodies
Applications:	WB
Recommended Dilution:	WB
Reactivity:	Human
Host:	Rabbit
Isotype:	IgG
Clonality:	Polyclonal
Immunogen:	The immunogen for Anti-GFRAL Antibody is: synthetic peptide directed towards the N-terminal region of Human GFRAL. Synthetic peptide located within the following region: TDDFYCTVNKLLGKKCINKSDNVKEDKFKWNLTTTRSHHGFKGMWSCLEVA
Formulation:	Liquid. Purified antibody supplied in 1x PBS buffer with 0.09% (w/v) sodium azide and 2% sucrose. <i>Note that this product is shipped as lyophilized powder to China customers.</i>
Conjugation:	Unconjugated
Storage:	Store at -20°C as received.
Stability:	Stable for 12 months from date of receipt.
Predicted Protein Size:	43 kDa
Gene Name:	GDNF family receptor alpha like
Database Link:	NP_997293 Entrez Gene 389400 Human Q6UXV0
Background:	The function of this protein remains unknown.
Synonyms:	bA360D14.1; C6orf144; GRAL; UNQ9356
Note:	Immunogen sequence homology: Human: 100%; Rabbit: 92%; Bovine: 85%; Pig: 77%
Protein Families:	Druggable Genome, Transmembrane



[View online »](#)

Product images:

Host: Rabbit; Target Name: GFRAL; Sample
Tissue: HeLa Whole cell lysates; Antibody Dilution:
1.0ug/ml