

Product datasheet for **TA331488**

C14orf181 Rabbit Polyclonal Antibody

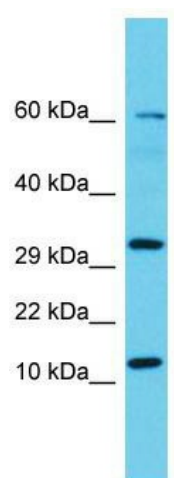
Product data:

Product Type:	Primary Antibodies
Applications:	WB
Recommended Dilution:	WB
Reactivity:	Human
Host:	Rabbit
Isotype:	IgG
Clonality:	Polyclonal
Immunogen:	The immunogen for Anti-C14orf181 Antibody is: synthetic peptide directed towards the N-terminal region of Human C14orf181. Synthetic peptide located within the following region: KTFTFPLAQNRSTSHPTTTSKLYLGRPSRRDALQANGEGPEVGPTEEP
Formulation:	Liquid. Purified antibody supplied in 1x PBS buffer with 0.09% (w/v) sodium azide and 2% sucrose. <i>Note that this product is shipped as lyophilized powder to China customers.</i>
Conjugation:	Unconjugated
Storage:	Store at -20°C as received.
Stability:	Stable for 12 months from date of receipt.
Predicted Protein Size:	18 kDa
Database Link:	NP_997325 Entrez Gene 400223
Background:	The function of this protein remains unknown.
Synonyms:	FLJ39779
Note:	Immunogen sequence homology: Human: 100%



[View online »](#)

Product images:



Host: Rabbit; Target Name: C14orf181; Sample
Tissue: PANC1 Whole Cell lysates; Antibody
Dilution: 1.0ug/ml