

## Product datasheet for **TA331486**

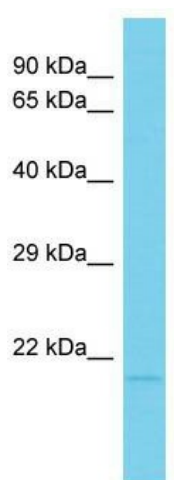
### LINC02694 Rabbit Polyclonal Antibody

#### Product data:

Product Type:	Primary Antibodies
Applications:	WB
Recommended Dilution:	WB
Reactivity:	Human
Host:	Rabbit
Isotype:	IgG
Clonality:	Polyclonal
Immunogen:	The immunogen for Anti-C15orf53 Antibody is: synthetic peptide directed towards the N-terminal region of Human C15orf53. Synthetic peptide located within the following region: LGISLSSPRRNHETRPGSKAKGRSSICLQASVWMAGGKLRRLRASEHLTQG
Formulation:	Liquid. Purified antibody supplied in 1x PBS buffer with 0.09% (w/v) sodium azide and 2% sucrose. <i>Note that this product is shipped as lyophilized powder to China customers.</i>
Conjugation:	Unconjugated
Storage:	Store at -20°C as received.
Stability:	Stable for 12 months from date of receipt.
Predicted Protein Size:	20 kDa
Gene Name:	chromosome 15 open reading frame 53
Database Link:	<a href="#">NP_997327</a> <a href="#">Entrez Gene 400359 Human</a>
Background:	The function of this protein remains unknown.
Synonyms:	FLJ35695; MGC148119
Note:	Immunogen sequence homology: Human: 100%



[View online »](#)

**Product images:**

Host: Rabbit; Target Name: C15orf53; Sample  
Tissue: HT1080 Whole Cell lysates; Antibody  
Dilution: 1.0ug/ml