

Product datasheet for **TA331485**

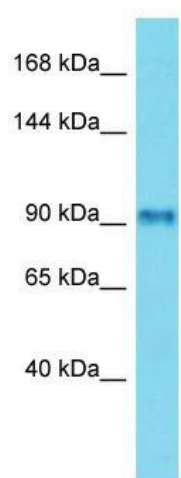
FSIP2 Rabbit Polyclonal Antibody

Product data:

Product Type:	Primary Antibodies
Applications:	WB
Recommended Dilution:	WB
Reactivity:	Human
Host:	Rabbit
Isotype:	IgG
Clonality:	Polyclonal
Immunogen:	The immunogen for Anti-FSIP2 Antibody is: synthetic peptide directed towards the C-terminal region of Human FSIP2. Synthetic peptide located within the following region: GNSVKFITIFERSKDVLG SANPSKEV ISETPKPDVSKQGS KMLTKMSSTL
Formulation:	Liquid. Purified antibody supplied in 1x PBS buffer with 0.09% (w/v) sodium azide and 2% sucrose.
Conjugation:	Unconjugated
Storage:	Store at -20°C as received.
Stability:	Stable for 12 months from date of receipt.
Predicted Protein Size:	108 kDa
Gene Name:	fibrous sheath interacting protein 2
Database Link:	NP_997365 Entrez Gene 401024 Human Q5CZC0
Background:	The function of this protein remains unknown.
Synonyms:	FLJ44063; FLJ44101; FLJ44116
Note:	Immunogen sequence homology: Human: 100%; Rabbit: 92%; Dog: 79%



[View online »](#)

Product images:


Host: Rabbit; Target Name: FSIP2; Sample Tissue: Placenta lysates; Antibody Dilution: 1.0ug/ml