

Product datasheet for **TA331484**

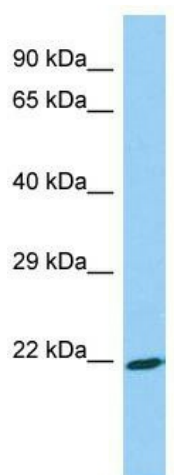
ASB18 Rabbit Polyclonal Antibody

Product data:

Product Type:	Primary Antibodies
Applications:	WB
Recommended Dilution:	WB
Reactivity:	Human
Host:	Rabbit
Isotype:	IgG
Clonality:	Polyclonal
Immunogen:	The immunogen for Anti-ASB18 Antibody is: synthetic peptide directed towards the N-terminal region of Human ASB18. Synthetic peptide located within the following region: SNSDYLPDYPLNSDLVKRLKSALDAKDEERVRLICTEITPVDVIELAN
Formulation:	Liquid. Purified antibody supplied in 1x PBS buffer with 0.09% (w/v) sodium azide and 2% sucrose.
Conjugation:	Unconjugated
Storage:	Store at -20°C as received.
Stability:	Stable for 12 months from date of receipt.
Predicted Protein Size:	21 kDa
Gene Name:	ankyrin repeat and SOCS box containing 18
Database Link:	NP_997721 Entrez Gene 401036 Human Q6ZVZ8
Background:	ASB18 may be a substrate-recognition component of a SCF-like ECS (Elongin-Cullin-SOCS-box protein) E3 ubiquitin-protein ligase complex which mediates the ubiquitination and subsequent proteasomal degradation of target proteins.
Synonyms:	ASB-18
Note:	Immunogen sequence homology: Human: 100%; Horse: 86%; Pig: 85%



[View online »](#)

Product images:

Host: Rabbit; Target Name: ASB18; Sample
Tissue: Fetal Liver lysates; Antibody Dilution:
1.0ug/ml