

Product datasheet for **TA331481**

FUBP1 Rabbit Polyclonal Antibody

Product data:

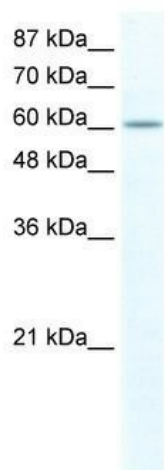
Product Type:	Primary Antibodies
Applications:	WB
Recommended Dilution:	WB
Reactivity:	Human
Host:	Rabbit
Isotype:	IgG
Clonality:	Polyclonal
Immunogen:	The immunogen for anti-FUBP1 antibody: synthetic peptide directed towards the N terminal of human FUBP1. Synthetic peptide located within the following region: IGKGGETIKQLQERAGVKMVMIQDGPQNTGADKPLRITGDPYKVQQAEM
Formulation:	Liquid. Purified antibody supplied in 1x PBS buffer with 0.09% (w/v) sodium azide and 2% sucrose. <i>Note that this product is shipped as lyophilized powder to China customers.</i>
Conjugation:	Unconjugated
Storage:	Store at -20°C as received.
Stability:	Stable for 12 months from date of receipt.
Predicted Protein Size:	68 kDa
Gene Name:	far upstream element binding protein 1
Database Link:	NP_003893 Entrez Gene 8880 Human Q96AE4
Background:	Far upstream element-binding protein activates the far upstream element (FUSE) of c-myc and stimulates expression of c-myc in undifferentiated cells. Regulation of FUSE by FUBP occurs through single-strand binding of FUBP to the non-coding strand. FUBP activity may be regulated by alternative splicing, translation efficiency, and posttranslational modification.
Synonyms:	FBP; FUBP; hDH V
Note:	Dog: 100%; Pig: 100%; Rat: 100%; Horse: 100%; Human: 100%; Mouse: 100%; Bovine: 100%; Rabbit: 100%; Zebrafish: 100%; Guinea pig: 100%



[View online »](#)

Protein Families: Stem cell - Pluripotency, Transcription Factors

Product images:



WB Suggested Anti-FUBP1 Antibody Titration:
2.5ug/ml; ELISA Titer: 1:1562500; Positive Control:
HepG2 cell lysate FUBP1 is strongly supported by
BioGPS gene expression data to be expressed in
Human HepG2 cells