

Product datasheet for **TA331479**

LDB1 Rabbit Polyclonal Antibody

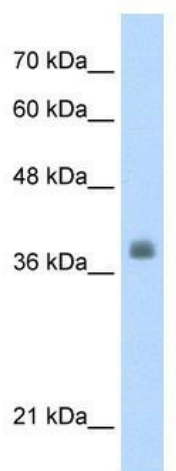
Product data:

Product Type:	Primary Antibodies
Applications:	WB
Recommended Dilution:	WB
Reactivity:	Human
Host:	Rabbit
Isotype:	IgG
Clonality:	Polyclonal
Immunogen:	The immunogen for anti-LDB1 antibody: synthetic peptide directed towards the C terminal of human LDB1. Synthetic peptide located within the following region: VVGEP TLMGGEGFGDEDERLITRLENTQFDAANGIDDEDSFNNSPALGANS
Formulation:	Liquid. Purified antibody supplied in 1x PBS buffer with 0.09% (w/v) sodium azide and 2% sucrose. <i>Note that this product is shipped as lyophilized powder to China customers.</i>
Conjugation:	Unconjugated
Storage:	Store at -20°C as received.
Stability:	Stable for 12 months from date of receipt.
Predicted Protein Size:	43 kDa
Gene Name:	LIM domain binding 1
Database Link:	NP_003884 Entrez Gene 8861 Human Q86U70
Background:	LDB1 is a transcriptional activator that associates with the LIM homeoproteins and coordinate transcription. LIM homeoproteins and LDBs are involved in a variety of developmental processes.
Synonyms:	CLIM2; NLI
Note:	Dog: 100%; Pig: 100%; Rat: 100%; Horse: 100%; Human: 100%; Mouse: 100%; Bovine: 100%; Rabbit: 100%; Zebrafish: 100%; Guinea pig: 100%
Protein Families:	Transcription Factors



[View online »](#)

Product images:



WB Suggested Anti-LDB1 Antibody Titration: 0.2-1 ug/ml; ELISA Titer: 1:12500; Positive Control: HepG2 cell lysate