

Product datasheet for **TA331474**

DDX46 Rabbit Polyclonal Antibody

Product data:

Product Type:	Primary Antibodies
Applications:	WB
Recommended Dilution:	WB
Reactivity:	Human
Host:	Rabbit
Isotype:	IgG
Clonality:	Polyclonal
Immunogen:	The immunogen for anti-DDX46 antibody: synthetic peptide directed towards the C terminal of human DDX46. Synthetic peptide located within the following region: GERKIYLAIESANELAVQKAKAEITRLIKEELIRLQNSYQPTNKGRYKVL
Formulation:	Liquid. Purified antibody supplied in 1x PBS buffer with 0.09% (w/v) sodium azide and 2% sucrose. <i>Note that this product is shipped as lyophilized powder to China customers.</i>
Conjugation:	Unconjugated
Storage:	Store at -20°C as received.
Stability:	Stable for 12 months from date of receipt.
Predicted Protein Size:	113 kDa
Gene Name:	DEAD-box helicase 46
Database Link:	NP_055644 Entrez Gene 9879 Human Q7L014
Background:	DDX46 is a member of the DEAD box protein family. DEAD box proteins, characterized by the conserved motif Asp-Glu-Ala-Asp (DEAD), are putative RNA helicases. They are implicated in a number of cellular processes involving alteration of RNA secondary structure, such as translation initiation, nuclear and mitochondrial splicing, and ribosome and spliceosome assembly. Based on their distribution patterns, some members of this family are believed to be involved in embryogenesis, spermatogenesis, and cellular growth and division. DDX46 is a component of the 17S U2 snRNP complex; it plays an important role in pre-mRNA splicing.



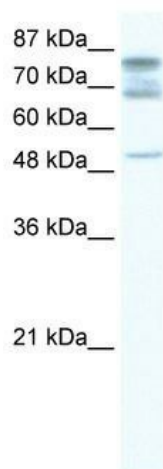
[View online »](#)

Synonyms: Prp5; PRPF5

Note: Dog: 100%; Pig: 100%; Rat: 100%; Horse: 100%; Human: 100%; Mouse: 100%; Bovine: 100%; Rabbit: 100%; Guinea pig: 100%; Zebrafish: 93%

Protein Pathways: Spliceosome

Product images:



WB Suggested Anti-DDX46 Antibody Titration:
1.25ug/ml; ELISA Titer: 1:12500; Positive Control:
Jurkat cell lysate DDX46 is supported by BioGPS
gene expression data to be expressed in Jurkat