

Product datasheet for TA331472

G3BP (G3BP1) Rabbit Polyclonal Antibody

Product data:

Product Type:	Primary Antibodies
Applications:	WB
Recommended Dilution:	WB
Reactivity:	Human
Host:	Rabbit
Isotype:	IgG
Clonality:	Polyclonal
Immunogen:	The immunogen for anti-G3BP antibody: synthetic peptide directed towards the N terminal of human G3BP. Synthetic peptide located within the following region: EVFGGFVTEPQEESSEEEVEEPEERQQTPEVVPDDSGTFYDQAVVSNDMEE
Formulation:	Liquid. Purified antibody supplied in 1x PBS buffer with 0.09% (w/v) sodium azide and 2% sucrose. <i>Note that this product is shipped as lyophilized powder to China customers.</i>
Conjugation:	Unconjugated
Storage:	Store at -20°C as received.
Stability:	Stable for 12 months from date of receipt.
Predicted Protein Size:	51 kDa
Gene Name:	G3BP stress granule assembly factor 1
Database Link:	NP_005745 Entrez Gene 10146 Human Q13283
Background:	G3BP is one of the DNA-unwinding enzymes which prefers partially unwound 3'-tailed substrates and can also unwind partial RNA/DNA and RNA/RNA duplexes in an ATP-dependent fashion. This enzyme is a member of the heterogeneous nuclear RNA-binding proteins and is also an element of the Ras signal transduction pathway. It binds specifically to the Ras-GTPase-activating protein by associating with its SH3 domain. Several alternatively spliced transcript variants of this gene have been described, but the full-length nature of some of these variants has not been determined.



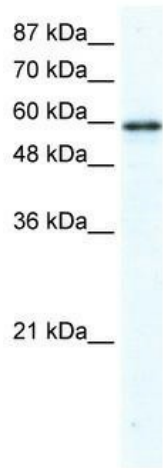
[View online »](#)

Synonyms: G3BP; HDH-VIII

Note: Dog: 100%; Pig: 100%; Rat: 100%; Horse: 100%; Human: 100%; Mouse: 100%; Bovine: 100%; Rabbit: 100%; Guinea pig: 93%

Protein Families: Druggable Genome

Product images:



WB Suggested Anti-G3BP Antibody Titration: 2.5ug/ml; ELISA Titer: 1:312500; Positive Control: HepG2 cell lysate



Anti-G3BP Western Blot & Peptide Block Validation

Lysate: HepG2 Cell

Lane A: Primary Antibody
Lane B: Primary Antibody + Blocking Peptide

Primary Antibody Concentration: 2.5µg/ml
Peptide Concentration: 2.0µg/ml
Lysate Quantity: 25µg/lane
Gel Concentration: 12%

Host: Rabbit; Target Name: G3BP; Sample Tissue: HepG2; Lane A: Primary Antibody; Lane B: Primary Antibody + Blocking Peptide ; Primary Antibody Concentration:2.5ug/mL; Peptide Concentration: 2.0ug/mL; Lysate Quantity: 25ug/lane; Gel Concentration: 12%