

Product datasheet for **TA331471**

DDX1 Rabbit Polyclonal Antibody

Product data:

Product Type:	Primary Antibodies
Applications:	WB
Recommended Dilution:	WB
Reactivity:	Human
Host:	Rabbit
Isotype:	IgG
Clonality:	Polyclonal
Immunogen:	The immunogen for anti-DDX1 antibody: synthetic peptide directed towards the C terminal of human DDX1. Synthetic peptide located within the following region: SQVEPDIKVPVDFDVGKVTYGGKRAAGGGSYKGVHVDILAPTVQELAALK
Formulation:	Liquid. Purified antibody supplied in 1x PBS buffer with 0.09% (w/v) sodium azide and 2% sucrose. <i>Note that this product is shipped as lyophilized powder to China customers.</i>
Conjugation:	Unconjugated
Storage:	Store at -20°C as received.
Stability:	Stable for 12 months from date of receipt.
Predicted Protein Size:	81 kDa
Gene Name:	DEAD/H-box helicase 1
Database Link:	NP_004930 Entrez Gene 1653 Human Q92499
Background:	DEAD box proteins, characterized by the conserved motif Asp-Glu-Ala-Asp (DEAD), are putative RNA helicases. They are implicated in a number of cellular processes involving alteration of RNA secondary structure such as translation initiation, nuclear and mitochondrial splicing, and ribosome and spliceosome assembly. Based on their distribution patterns, some members of this family are believed to be involved in embryogenesis, spermatogenesis, and cellular growth and division. This gene encodes a DEAD box protein of unknown function. It shows high transcription levels in 2 retinoblastoma cell lines and in tissues of neuroectodermal origin.



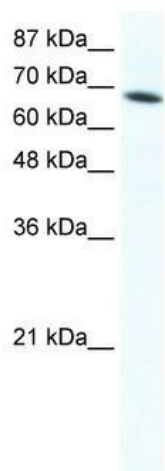
[View online »](#)

Synonyms: DBP-RB; UKVH5d

Note: Dog: 100%; Pig: 100%; Rat: 100%; Horse: 100%; Human: 100%; Mouse: 100%; Bovine: 100%; Rabbit: 100%; Guinea pig: 100%; Zebrafish: 93%

Protein Families: Druggable Genome

Product images:



WB Suggested Anti-DDX1 Antibody Titration:
1.25ug/ml; ELISA Titer: 1:62500; Positive Control:
Jurkat cell lysate DDX1 is supported by BioGPS
gene expression data to be expressed in Jurkat