

## Product datasheet for **TA331470**

### DHX16 Rabbit Polyclonal Antibody

#### Product data:

Product Type:	Primary Antibodies
Applications:	WB
Recommended Dilution:	WB
Reactivity:	Human
Host:	Rabbit
Isotype:	IgG
Clonality:	Polyclonal
Immunogen:	The immunogen for anti-DHX16 antibody: synthetic peptide directed towards the N terminal of human DHX16. Synthetic peptide located within the following region: KYQLVLEEEETIEFVRATQLQGDEEPSAPPTSTQAQKESIQAVRRSLPV
Formulation:	Liquid. Purified antibody supplied in 1x PBS buffer with 0.09% (w/v) sodium azide and 2% sucrose. <i>Note that this product is shipped as lyophilized powder to China customers.</i>
Conjugation:	Unconjugated
Storage:	Store at -20°C as received.
Stability:	Stable for 12 months from date of receipt.
Predicted Protein Size:	115 kDa
Gene Name:	DEAH-box helicase 16
Database Link:	<a href="#">NP_003578</a> <a href="#">Entrez Gene 8449 Human</a> <a href="#">O60231</a>



[View online »](#)

**Background:**

DEAD box proteins, characterized by the conserved motif Asp-Glu-Ala-Asp (DEAD), are putative RNA helicases. They are implicated in a number of cellular processes involving alteration of RNA secondary structure such as translation initiation, nuclear and mitochondrial splicing, and ribosome and spliceosome assembly. Based on their distribution patterns, some members of this family are believed to be involved in embryogenesis, spermatogenesis, and cellular growth and division. This gene encodes a DEAD box protein, which is a functional homolog of fission yeast Prp8 protein involved in cell cycle progression. This gene is mapped to the MHC region on chromosome 6p21.3, a region where many malignant, genetic and autoimmune disease genes are linked.

**Synonyms:**

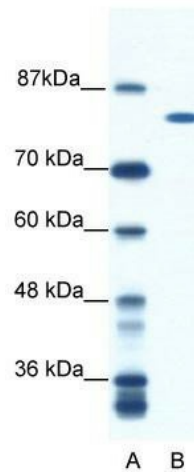
DBP2; DDX16; PRO2014; Prp2; PRP8; PRPF2

**Note:**

Human: 100%; Goat: 86%; Horse: 86%; Bovine: 86%; Pig: 85%; Rat: 79%; Mouse: 79%; Rabbit: 77%

**Protein Pathways:**

Spliceosome

**Product images:**

WB Suggested Anti-DHX16 Antibody Titration: 0.125ug/ml; ELISA Titer: 1:62500; Positive Control: Jurkat cell lysate DHX16 is supported by BioGPS gene expression data to be expressed in Jurkat