

## Product datasheet for **TA331469**

### Tle5 Rabbit Polyclonal Antibody

#### Product data:

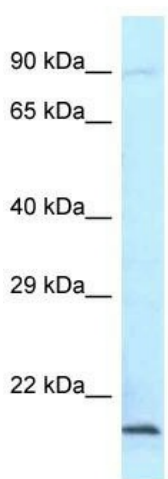
Product Type:	Primary Antibodies
Applications:	WB
Recommended Dilution:	WB
Reactivity:	Mouse
Host:	Rabbit
Isotype:	IgG
Clonality:	Polyclonal
Immunogen:	The immunogen for Anti-Aes antibody is: synthetic peptide directed towards the C-terminal region of MOUSE Aes. Synthetic peptide located within the following region: TPLPVGLQPPSLPAVSAGTGLLSLSALGSQTHLSKEDKNGHDGDTHQEDD
Formulation:	Liquid. Purified antibody supplied in 1x PBS buffer with 0.09% (w/v) sodium azide and 2% sucrose. <i>Note that this product is shipped as lyophilized powder to China customers.</i>
Purification:	Affinity Purified
Conjugation:	Unconjugated
Storage:	Store at -20°C as received.
Stability:	Stable for 12 months from date of receipt.
Predicted Protein Size:	21 kDa
Gene Name:	amino-terminal enhancer of split
Database Link:	<a href="#">NP_034477</a> <a href="#">Entrez Gene 14797 Mouse P63002</a>
Background:	This gene encodes a protein that belongs to the Aes (amino-terminal enhancer of split) subgroup of the Groucho/transducin-like Enhancer of split (TLE) family of proteins that function as transcriptional corepressors. The encoded protein plays a role in neurological development and cell-fate determination. Alternatively spliced transcript variants have been observed for this gene.
Synonyms:	AES-1; AES-2; ESP1; GRG; GRG5; TLE5



[View online »](#)

Note: Pig: 100%; Rat: 100%; Human: 100%; Mouse: 100%; Bovine: 100%; Guinea pig: 100%

### Product images:



Host: Rabbit  
Target Name: Aes  
Sample Tissue: Mouse Heart Lysate  
Antibody Dilution: 1.0µg/ml

Host: Rabbit; Target Name: Aes ; Sample Tissue: Mouse Heart lysates; Antibody Dilution: 1.0ug/ml