

Product datasheet for **TA331467**

KCNQ5 Rabbit Polyclonal Antibody

Product data:

Product Type:	Primary Antibodies
Applications:	WB
Recommended Dilution:	WB
Reactivity:	Human
Host:	Rabbit
Isotype:	IgG
Clonality:	Polyclonal
Immunogen:	The immunogen for anti-KCNQ5 antibody: synthetic peptide directed towards the middle region of human KCNQ5. Synthetic peptide located within the following region: LGKQGITSDDKKSREKITAETHETDDLSMLGRVVKVEKQVQSIESKLDCLL
Formulation:	Liquid. Purified antibody supplied in 1x PBS buffer with 0.09% (w/v) sodium azide and 2% sucrose. <i>Note that this product is shipped as lyophilized powder to China customers.</i>
Conjugation:	Unconjugated
Storage:	Store at -20°C as received.
Stability:	Stable for 12 months from date of receipt.
Predicted Protein Size:	102 kDa
Gene Name:	potassium voltage-gated channel subfamily Q member 5
Database Link:	NP_062816 Entrez Gene 56479 Human Q9NR82
Background:	This gene is a member of the KCNQ potassium channel gene family that is differentially expressed in subregions of the brain and in skeletal muscle. The protein encoded by this gene yields currents that activate slowly with depolarization and can form heteromeric channels with the protein encoded by the KCNQ3 gene. Currents expressed from this protein have voltage dependences and inhibitor sensitivities in common with M-currents. They are also inhibited by M1 muscarinic receptor activation. Multiple transcript variants encoding different isoforms have been found for this gene. [provided by RefSeq, May 2009]



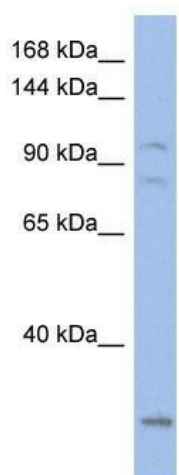
[View online »](#)

Synonyms: Kv7.5

Note: Dog: 100%; Pig: 100%; Rat: 100%; Horse: 100%; Human: 100%; Mouse: 100%; Rabbit: 100%; Bovine: 93%; Guinea pig: 93%

Protein Families: Druggable Genome, Ion Channels: Potassium, Transmembrane

Product images:



WB Suggested Anti-KCNQ5 Antibody Titration:
0.2-1 ug/ml; ELISA Titer: 1:312500; Positive
Control: HT1080 cell lysate