

Product datasheet for **TA331466**

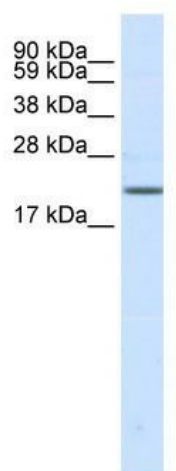
SCN3B Rabbit Polyclonal Antibody

Product data:

Product Type:	Primary Antibodies
Applications:	WB
Recommended Dilution:	WB
Reactivity:	Human
Host:	Rabbit
Isotype:	IgG
Clonality:	Polyclonal
Immunogen:	The immunogen for anti-SCN3B antibody: synthetic peptide directed towards the N terminal of human SCN3B. Synthetic peptide located within the following region: RPEGGKDFLIYEYRNGHQEVESPFQGRQLQWNGSKDLQDVSITVLNVTLND
Formulation:	Liquid. Purified antibody supplied in 1x PBS buffer with 0.09% (w/v) sodium azide and 2% sucrose. <i>Note that this product is shipped as lyophilized powder to China customers.</i>
Conjugation:	Unconjugated
Storage:	Store at -20°C as received.
Stability:	Stable for 12 months from date of receipt.
Predicted Protein Size:	24 kDa
Gene Name:	sodium voltage-gated channel beta subunit 3
Database Link:	NP_060870 Entrez Gene 55800 Human Q9NY72
Background:	SCN3B is one member of the sodium channel beta subunits of voltage-gated sodium channels, which are responsible for the generation and propagation of action potentials in neurons and muscle. SCN3B influences the inactivation kinetics of the sodium channel.
Synonyms:	ATFB16; BRGDA7; HSA243396; SCNB3
Note:	Rat: 100%; Horse: 100%; Human: 100%; Mouse: 100%; Bovine: 100%; Rabbit: 100%; Dog: 93%; Pig: 93%; Guinea pig: 93%
Protein Families:	Druggable Genome, Ion Channels: Sodium, Transmembrane



[View online »](#)

Product images:

WB Suggested Anti-SCN3B Antibody Titration:
0.2-1 ug/ml; ELISA Titer: 1:12500; Positive Control:
Human brain