

Product datasheet for **TA331460**

TPTE Rabbit Polyclonal Antibody

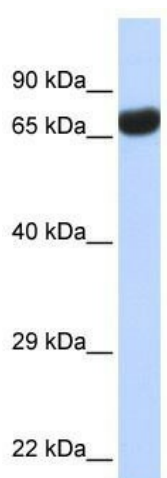
Product data:

Product Type:	Primary Antibodies
Applications:	WB
Recommended Dilution:	WB
Reactivity:	Human
Host:	Rabbit
Isotype:	IgG
Clonality:	Polyclonal
Immunogen:	The immunogen for anti-TPTE antibody: synthetic peptide directed towards the middle region of human TPTE. Synthetic peptide located within the following region: YFAQVKHLYNWNLP RRILFIKHFIYSIPRYVRDLKIQIEMEKKVVFST
Formulation:	Liquid. Purified antibody supplied in 1x PBS buffer with 0.09% (w/v) sodium azide and 2% sucrose. <i>Note that this product is shipped as lyophilized powder to China customers.</i>
Conjugation:	Unconjugated
Storage:	Store at -20°C as received.
Stability:	Stable for 12 months from date of receipt.
Predicted Protein Size:	64 kDa
Gene Name:	transmembrane phosphatase with tensin homology
Database Link:	NP_954870 Entrez Gene 7179 Human P56180
Background:	TPTE encodes a putative transmembrane tyrosine phosphatase that may be involved in signal transduction pathways of the endocrine or spermatogenetic function of the testis.
Synonyms:	CT44; PTEN2
Note:	Human: 100%
Protein Families:	Druggable Genome, Transmembrane



[View online »](#)

Product images:



WB Suggested Anti-TPTE Antibody Titration: 0.2-1 ug/ml; ELISA Titer: 1:62500; Positive Control: Human Lung