

Product datasheet for **TA331459**

KCNH3 Rabbit Polyclonal Antibody

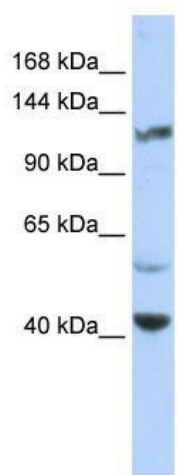
Product data:

Product Type:	Primary Antibodies
Applications:	WB
Recommended Dilution:	WB
Reactivity:	Human
Host:	Rabbit
Isotype:	IgG
Clonality:	Polyclonal
Immunogen:	The immunogen for anti-KCNH3 antibody: synthetic peptide directed towards the middle region of human KCNH3. Synthetic peptide located within the following region: LYPEFAPRFSRGLRGELSYNLGAGGGSAEVDTSLSGDNTLMSTLEEKET
Formulation:	Liquid. Purified antibody supplied in 1x PBS buffer with 0.09% (w/v) sodium azide and 2% sucrose. <i>Note that this product is shipped as lyophilized powder to China customers.</i>
Conjugation:	Unconjugated
Storage:	Store at -20°C as received.
Stability:	Stable for 12 months from date of receipt.
Predicted Protein Size:	117 kDa
Gene Name:	potassium voltage-gated channel subfamily H member 3
Database Link:	NP_036416 Entrez Gene 23416 Human Q9ULD8
Background:	The exact function of this protein remains unknown.
Synonyms:	BEC1; ELK2; Kv12.2
Note:	Human: 100%; Rat: 93%; Mouse: 93%; Rabbit: 93%; Dog: 86%; Pig: 86%; Horse: 86%; Bovine: 86%; Guinea pig: 86%
Protein Families:	Druggable Genome, Ion Channels: Potassium, Transmembrane



[View online »](#)

Product images:



WB Suggested Anti-KCNH3 Antibody Titration:
0.2-1 ug/ml; ELISA Titer: 1:62500; Positive Control:
Hela cell lysate