

## Product datasheet for **TA331458**

### KCNK5 Rabbit Polyclonal Antibody

#### Product data:

Product Type:	Primary Antibodies
Applications:	WB
Recommended Dilution:	WB
Reactivity:	Human
Host:	Rabbit
Isotype:	IgG
Clonality:	Polyclonal
Immunogen:	The immunogen for anti-KCNK5 antibody: synthetic peptide directed towards the C terminal of human KCNK5. Synthetic peptide located within the following region: TfvNTEAGLSDEETSKSSLEDNLAGEESPQQGAEAKAPLNMGEFPSSSES
Formulation:	Liquid. Purified antibody supplied in 1x PBS buffer with 0.09% (w/v) sodium azide and 2% sucrose. <i>Note that this product is shipped as lyophilized powder to China customers.</i>
Conjugation:	Unconjugated
Storage:	Store at -20°C as received.
Stability:	Stable for 12 months from date of receipt.
Predicted Protein Size:	55 kDa
Gene Name:	potassium two pore domain channel subfamily K member 5
Database Link:	<a href="#">NP_003731</a> <a href="#">Entrez Gene 8645 Human</a> <a href="#">O95279</a>
Background:	KCNK5 is one of the members of the superfamily of potassium channel proteins containing two pore-forming P domains. KCNK5 is mainly expressed in the cortical distal tubules and collecting ducts of the kidney. The protein is highly sensitive to external pH and this, in combination with its expression pattern, suggests it may play an important role in renal potassium transport.
Synonyms:	K2p5.1; KCNK5b; TASK-2; TASK2

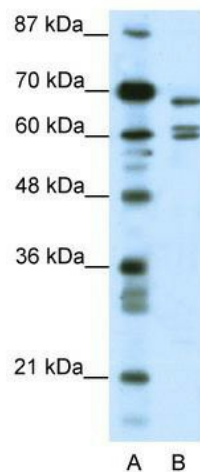


[View online »](#)

**Note:** Pig: 100%; Horse: 100%; Human: 100%; Bovine: 100%; Guinea pig: 100%; Dog: 92%; Rat: 92%; Rabbit: 92%

**Protein Families:** Druggable Genome, Ion Channels: Potassium, Transmembrane

**Product images:**



WB Suggested Anti-KCNK5 Antibody Titration:  
0.2-1 ug/ml; ELISA Titer: 1:62500; Positive Control:  
HepG2 cell lysate