

Product datasheet for **TA331456**

Kv beta 2 (KCNAB2) Rabbit Polyclonal Antibody

Product data:

Product Type:	Primary Antibodies
Applications:	IHC, WB
Recommended Dilution:	WB, IHC
Reactivity:	Human, Mouse
Host:	Rabbit
Isotype:	IgG
Clonality:	Polyclonal
Immunogen:	The immunogen for anti-KCNAB2 antibody: synthetic peptide directed towards the middle region of human KCNAB2. Synthetic peptide located within the following region: WGGKAETERGLSRKHIIIEGLKASLERLQLEYVDVVFANRPDPNTPMEETV
Formulation:	Liquid. Purified antibody supplied in 1x PBS buffer with 0.09% (w/v) sodium azide and 2% sucrose. <i>Note that this product is shipped as lyophilized powder to China customers.</i>
Conjugation:	Unconjugated
Storage:	Store at -20°C as received.
Stability:	Stable for 12 months from date of receipt.
Predicted Protein Size:	40 kDa
Gene Name:	potassium voltage-gated channel subfamily A regulatory beta subunit 2
Database Link:	NP_003627 Entrez Gene 16498 Mouse Entrez Gene 8514 Human Q13303
Background:	The functions of Voltage-gated potassium (Kv) channels include regulating neurotransmitter release, heart rate, insulin secretion, neuronal excitability, epithelial electrolyte transport, smooth muscle contraction, and cell volume. KCNAB2 is a member of the potassium channel, voltage-gated, shaker-related subfamily. This member is one of the beta subunits, which are auxiliary proteins associating with functional Kv-alpha subunits.
Synonyms:	AKR6A5; HKvbeta2; HKvbeta2.1; HKvbeta2.2; KCNA2B; KV-BETA-2

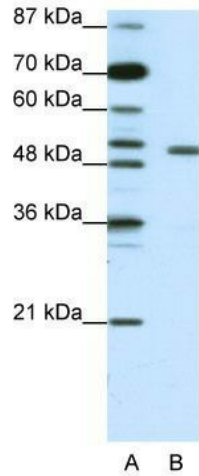


[View online »](#)

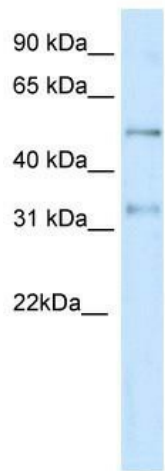
Note: Dog: 100%; Pig: 100%; Rat: 100%; Horse: 100%; Human: 100%; Mouse: 100%; Bovine: 100%; Rabbit: 100%; Zebrafish: 100%; Guinea pig: 100%; Yeast: 83%

Protein Families: Druggable Genome, Ion Channels: Other

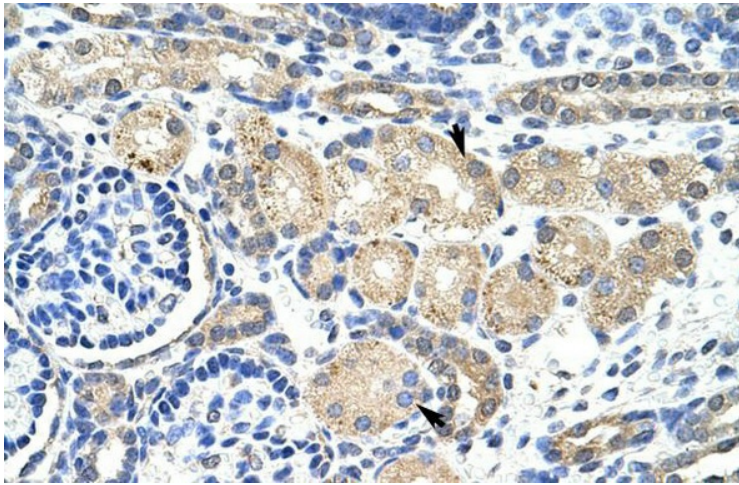
Product images:



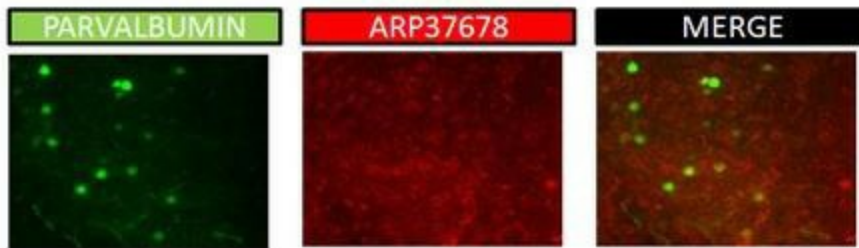
WB Suggested Anti-KCNA2 Antibody; Titration: 1.25ug/ml; Positive Control: Jurkat cell lysate



WB Suggested Anti-KCNA2 Antibody Titration: 0.2-1 ug/ml; ELISA Titer: 1:312500; Positive Control: Jurkat cell lysate KCNA2 is strongly supported by BioGPS gene expression data to be expressed in Human Jurkat cells



Rabbit Anti-KCAB2 Antibody; Catalog Number: ARP37678; Paraffin Embedded Tissue: Human Kidney; Cellular Data: Epithelial cells of renal tubule; Antibody Concentration: 4.0-8.0 ug/ml; Magnification: 400X



Sample Type: P48 Mouse; Dilution: 1:2000 tested with brain slices in Immunohistochemistry

Dilution: 1:2000