

Product datasheet for **TA331455**

KCNMA1 Rabbit Polyclonal Antibody

Product data:

Product Type:	Primary Antibodies
Applications:	WB
Recommended Dilution:	WB
Reactivity:	Human
Host:	Rabbit
Isotype:	IgG
Clonality:	Polyclonal
Immunogen:	The immunogen for anti-KCNMA1 antibody: synthetic peptide directed towards the middle region of human KCNMA1. Synthetic peptide located within the following region: ESRSRKRILINPGNHHLKIQEGTLGFFIASDAKEVKRAFFYCKACHDDITD
Formulation:	Liquid. Purified antibody supplied in 1x PBS buffer with 0.09% (w/v) sodium azide and 2% sucrose. <i>Note that this product is shipped as lyophilized powder to China customers.</i>
Conjugation:	Unconjugated
Storage:	Store at -20°C as received.
Stability:	Stable for 12 months from date of receipt.
Predicted Protein Size:	131 kDa
Gene Name:	potassium calcium-activated channel subfamily M alpha 1
Database Link:	NP_002238 Entrez Gene 3778 Human Q12791



[View online »](#)

Background:

This protein is a transcription factor that interacts with specific negative regulatory elements (NREs) to mediate transcriptional repression of certain NK-kappa-B-responsive genes. The protein localizes predominantly to the nucleolus with a small fraction found in the nucleoplasm and cytoplasm. MaxiK channels are large conductance, voltage and calcium-sensitive potassium channels which are fundamental to the control of smooth muscle tone and neuronal excitability. MaxiK channels can be formed by 2 subunits: the pore-forming alpha subunit, which is the product of this gene, and the modulatory beta subunit. Intracellular calcium regulates the physical association between the alpha and beta subunits. Alternatively spliced transcript variants encoding different isoforms have been identified.

Synonyms:

bA205K10.1; BKTM; hSlo; KCa1.1; MaxiK; mSLO1; SAKCA; SLO; SLO-ALPHA; SLO1

Note:

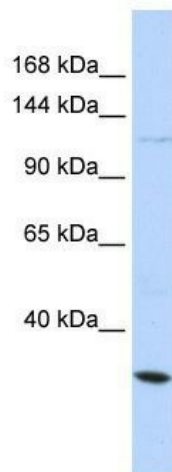
Dog: 100%; Pig: 100%; Rat: 100%; Horse: 100%; Human: 100%; Mouse: 100%; Sheep: 100%; Bovine: 100%; Rabbit: 100%; Guinea pig: 100%; Zebrafish: 85%

Protein Families:

Druggable Genome, Ion Channels: Potassium, Transmembrane

Protein Pathways:

Vascular smooth muscle contraction

Product images:

WB Suggested Anti-KCNMA1 Antibody Titration:
0.2-1 ug/ml; ELISA Titer: 1:62500; Positive Control:
Hela cell lysate