

## Product datasheet for **TA331453**

### Nicotinic Acetylcholine Receptor beta 2 (CHRN2) Rabbit Polyclonal Antibody

#### Product data:

Product Type:	Primary Antibodies
Applications:	WB
Recommended Dilution:	WB
Reactivity:	Human
Host:	Rabbit
Isotype:	IgG
Clonality:	Polyclonal
Immunogen:	The immunogen for anti-CHRN2 antibody: synthetic peptide directed towards the middle region of human CHRN2. Synthetic peptide located within the following region: KIEVKHFQDQDQNTMKFRSWTYDRTEIDLVLKSEVASLDDFTPSGEWDI
Formulation:	Liquid. Purified antibody supplied in 1x PBS buffer with 0.09% (w/v) sodium azide and 2% sucrose. <i>Note that this product is shipped as lyophilized powder to China customers.</i>
Conjugation:	Unconjugated
Storage:	Store at -20°C as received.
Stability:	Stable for 12 months from date of receipt.
Predicted Protein Size:	57 kDa
Gene Name:	cholinergic receptor nicotinic beta 2 subunit
Database Link:	<a href="#">NP_000739</a> <a href="#">Entrez Gene 1141 Human P17787</a>
Background:	Mutations in nAChRs are found in a rare form of nocturnal frontal lobe epilepsy . Previously, some nAChR mutations have been described that are associated with additional neurological features such as psychiatric disorders or cognitive defects. A new CHRN2 mutation located in transmembrane region 3 (M3), outside the known ADFLE mutation cluster. The CHRN2 mutation I312M, which occurred de novo in twins, markedly increases the receptor's sensitivity to acetylcholine. Phenotypically, the mutation is associated not only with typical ADFLE, but also with distinct deficits in memory. The cognitive problems are most obvious in tasks requiring the organization and storage of verbal information.



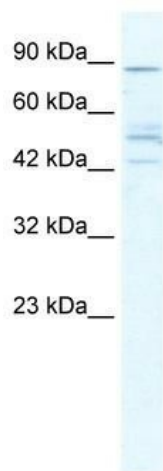
[View online »](#)

**Synonyms:** EFNL3; nAChRB2

**Note:** Pig: 100%; Human: 100%; Dog: 93%; Rat: 93%; Mouse: 93%; Bovine: 93%; Guinea pig: 93%; Yeast: 77%

**Protein Families:** Druggable Genome, Ion Channels: Cys-loop Receptors, Transmembrane

**Product images:**



WB Suggested Anti-CHRNA2 Antibody Titration:  
5.0ug/ml; ELISA Titer: 1:312500; Positive Control:  
HepG2 cell lysate