

Product datasheet for **TA331451**

Glypican 3 (GPC3) Rabbit Polyclonal Antibody

Product data:

Product Type:	Primary Antibodies
Applications:	IHC, WB
Recommended Dilution:	WB
Reactivity:	Human
Host:	Rabbit
Isotype:	IgG
Clonality:	Polyclonal
Immunogen:	The immunogen for anti-GPC3 antibody: synthetic peptide directed towards the middle region of human GPC3. Synthetic peptide located within the following region: FSTIHDSIQYVQKNAGKLTTTIGKLC AHSQQRQYRSAYYPEDLFIDKKVL
Formulation:	Liquid. Purified antibody supplied in 1x PBS buffer with 0.09% (w/v) sodium azide and 2% sucrose. <i>Note that this product is shipped as lyophilized powder to China customers.</i>
Conjugation:	Unconjugated
Storage:	Store at -20°C as received.
Stability:	Stable for 12 months from date of receipt.
Predicted Protein Size:	64 kDa
Gene Name:	glypican 3
Database Link:	NP_004475 Entrez Gene 2719 Human P51654
Background:	Cell surface heparan sulfate proteoglycans are composed of a membrane-associated protein core substituted with a variable number of heparan sulfate chains. Members of the glypican-related integral membrane proteoglycan family (GRIPS) contain a core protein anchored to the cytoplasmic membrane via a glycosyl phosphatidylinositol linkage. These proteins may play a role in the control of cell division and growth regulation. Deletion mutations in this gene are associated with Simpson-Golabi-Behmel syndrome.
Synonyms:	DGSX; GTR2-2; MXR7; OCI-5; SDYS; SGB; SGBS; SGBS1

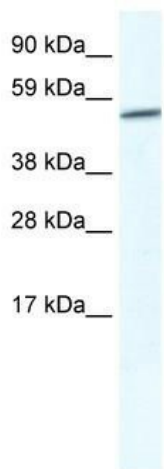


[View online »](#)

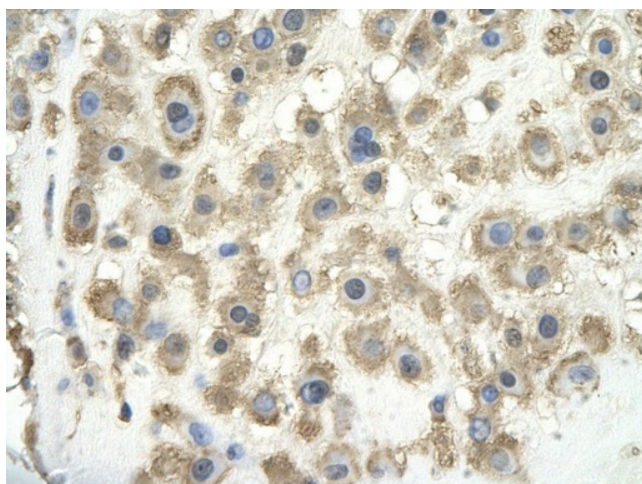
Note: Dog: 100%; Pig: 100%; Rat: 100%; Horse: 100%; Human: 100%; Mouse: 100%; Bovine: 100%; Rabbit: 100%; Guinea pig: 100%

Protein Families: Druggable Genome

Product images:



WB Suggested Anti-GPC3 Antibody Titration: 2.5ug/ml; ELISA Titer: 1:1562500; Positive Control: Human Placenta



Rabbit Anti-GPC3 antibody; Catalog Number: ARP37665_T100; Paraffin Embedded Tissue: Human Placenta cell; Cellular Data: Epithelial cells of renal tubule; Antibody Concentration: 4.0-8.0 ug/ml; Magnification: 400X