

Product datasheet for **TA331450**

Maml2 Rabbit Polyclonal Antibody

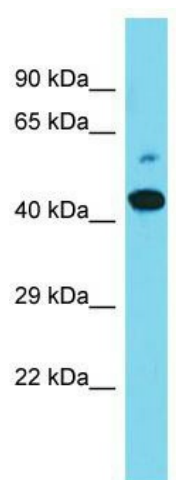
Product data:

Product Type:	Primary Antibodies
Applications:	WB
Recommended Dilution:	WB
Reactivity:	Mouse
Host:	Rabbit
Isotype:	IgG
Clonality:	Polyclonal
Immunogen:	The immunogen for Anti-Maml2 antibody is: synthetic peptide directed towards the C-terminal region of Mouse Maml2. Synthetic peptide located within the following region: GTGLNHPRTGTNQPSSLTPNAFPSSNQSSRAFGPDHGSDLAFDFLSQQS
Formulation:	Liquid. Purified antibody supplied in 1x PBS buffer with 0.09% (w/v) sodium azide and 2% sucrose. <i>Note that this product is shipped as lyophilized powder to China customers.</i>
Conjugation:	Unconjugated
Storage:	Store at -20°C as received.
Stability:	Stable for 12 months from date of receipt.
Predicted Protein Size:	45 kDa
Gene Name:	mastermind like 2 (Drosophila)
Database Link:	NP_776137 Entrez Gene 270118 Mouse
Background:	The function of this protein remains unknown.
Synonyms:	DKFZp686N0150; KIAA1819; Mam-2; MAM-3; MAM2; MAM3; MGC176701; MLL-MAML2
Note:	Mouse: 100%; Rat: 93%; Dog: 92%; Horse: 92%; Human: 92%; Bovine: 92%; Rabbit: 92%; Pig: 79%; Guinea pig: 79%



[View online »](#)

Product images:



Host: Rabbit; Target Name: Maml2; Sample
Tissue: Mouse Stomach lysates; Antibody
Dilution: 1.0ug/ml