

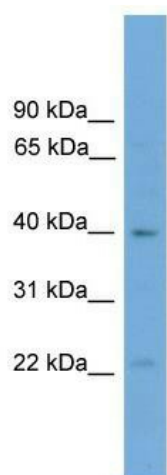
Product datasheet for **TA331449**

Dmrtb1 Rabbit Polyclonal Antibody

Product data:

Product Type:	Primary Antibodies
Applications:	WB
Recommended Dilution:	WB
Reactivity:	Mouse
Host:	Rabbit
Isotype:	IgG
Clonality:	Polyclonal
Immunogen:	The immunogen for anti-Dmrtb1 antibody: synthetic peptide directed towards the c terminal of mouse Dmrtb1. Synthetic peptide located within the following region: PHFLPPGYLSALHFLPPPPPPSPPSFSLTYDTDKENTNDQDAEAPTEPS
Formulation:	Liquid. Purified antibody supplied in 1x PBS buffer with 0.09% (w/v) sodium azide and 2% sucrose.
Conjugation:	Unconjugated
Storage:	Store at -20°C as received.
Stability:	Stable for 12 months from date of receipt.
Predicted Protein Size:	38 kDa
Gene Name:	DMRT-like family B with proline-rich C-terminal, 1
Database Link:	NP_063925 Entrez Gene 56296 Mouse A2A9I7
Background:	The function of this protein remains unknown.
Synonyms:	DMRTB1
Note:	Mouse: 100%; Rat: 81%; Human: 75%



Product images:

WB Suggested Anti-Dmrtb1 Antibody Titration:
0.2-1 ug/ml; ELISA Titer: 1:312500; Positive
Control: SP2/0 cell lysate