

## Product datasheet for **TA331448**

### Fam172a Rabbit Polyclonal Antibody

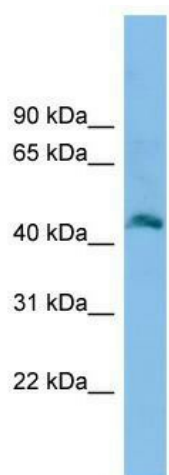
#### Product data:

Product Type:	Primary Antibodies
Applications:	WB
Recommended Dilution:	WB
Reactivity:	Mouse
Host:	Rabbit
Isotype:	IgG
Clonality:	Polyclonal
Immunogen:	The immunogen for anti-Fam172a antibody: synthetic peptide directed towards the n terminal of mouse 1110033M05Rik. Synthetic peptide located within the following region: NLVGARILREKVRARAQGSSPRDLEGHASSHLPSQHCSWGQSSDLLSRID
Formulation:	Liquid. Purified antibody supplied in 1x PBS buffer with 0.09% (w/v) sodium azide and 2% sucrose.
Conjugation:	Unconjugated
Storage:	Store at -20°C as received.
Stability:	Stable for 12 months from date of receipt.
Predicted Protein Size:	46 kDa
Gene Name:	family with sequence similarity 172, member A
Database Link:	<a href="#">NP_001156891</a> <a href="#">Entrez Gene 68675 Mouse</a> <a href="#">Q3TNH5</a>
Background:	The amino acid sequence of 1110033M05Rik is derived from an annotated genomic sequence (NT_039589) using gene prediction method: GNOMON, supported by mRNA and EST evidence.
Synonyms:	C5orf21; DKFZP564D172
Note:	Mouse: 100%



[View online »](#)

Product images:



WB Suggested Anti-Fam172a Antibody Titration:  
0.2-1 ug/ml; ELISA Titer: 1:12500; Positive Control:  
Mouse Muscle