

Product datasheet for **TA331447**

Taf3 Rabbit Polyclonal Antibody

Product data:

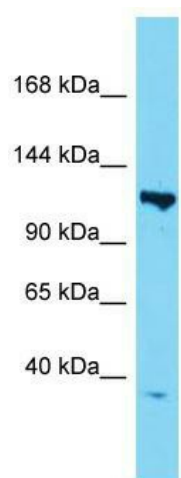
Product Type:	Primary Antibodies
Applications:	WB
Recommended Dilution:	WB
Reactivity:	Mouse
Host:	Rabbit
Isotype:	IgG
Clonality:	Polyclonal
Immunogen:	The immunogen for Anti-Taf3 antibody is: synthetic peptide directed towards the N-terminal region of Mouse Taf3. Synthetic peptide located within the following region: AALSPARLGSPKIPKTIPEKKSPPGRSKSPKSPKSPKIVAHVPQTPVVRP
Formulation:	Liquid. Purified antibody supplied in 1x PBS buffer with 0.09% (w/v) sodium azide and 2% sucrose. <i>Note that this product is shipped as lyophilized powder to China customers.</i>
Conjugation:	Unconjugated
Storage:	Store at -20°C as received.
Stability:	Stable for 12 months from date of receipt.
Predicted Protein Size:	105 kDa
Gene Name:	TATA-box binding protein associated factor 3
Database Link:	NP_082024 Entrez Gene 209361 Mouse Q5HZG4
Background:	Transcription factor TFIID is one of the general factors required for accurate and regulated initiation by RNA polymerase II. TFIID is a multimeric protein complex that plays a central role in mediating promoter responses to various activators and repressors. Required in complex with TBPL2 for the differentiation of myoblasts into myocytes. The complex replaces TFIID at specific promoters at an early stage in the differentiation process.
Synonyms:	MGC25063; TAF140; TAFII140



[View online »](#)

Note: Dog: 100%; Pig: 100%; Rat: 100%; Human: 100%; Mouse: 100%; Bovine: 100%; Rabbit: 100%; Guinea pig: 100%

Product images:



Host: Rabbit; Target Name: Taf3; Sample Tissue: Mouse Heart lysates; Antibody Dilution: 1.0ug/ml