

Product datasheet for **TA331442**

Tbpl2 Rabbit Polyclonal Antibody

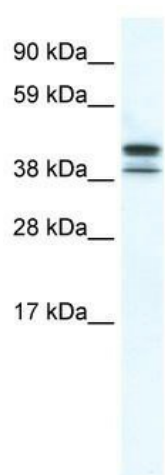
Product data:

Product Type:	Primary Antibodies
Applications:	WB
Recommended Dilution:	WB
Reactivity:	Mouse
Host:	Rabbit
Isotype:	IgG
Clonality:	Polyclonal
Immunogen:	The immunogen for anti-TRF3 antibody: synthetic peptide directed towards the N terminal of mouse TRF3. Synthetic peptide located within the following region: FHPHLGGVKKASTDFSSVDLSFLPDELDTQENRDQTVTGNKLASEESCRTR
Formulation:	Liquid. Purified antibody supplied in 1x PBS buffer with 0.09% (w/v) sodium azide and 2% sucrose. <i>Note that this product is shipped as lyophilized powder to China customers.</i>
Conjugation:	Unconjugated
Storage:	Store at -20°C as received.
Stability:	Stable for 12 months from date of receipt.
Predicted Protein Size:	39 kDa
Gene Name:	TATA box binding protein like 2
Database Link:	NP_951014 Entrez Gene 227606 Mouse Q6SJ95
Background:	TRF3 is a nuclear protein that is present in all human and mouse tissues and cell lines examined.
Synonyms:	TBP2; TRF3
Note:	Rat: 100%; Mouse: 100%



[View online »](#)

Product images:



WB Suggested Anti-TRF3 Antibody Titration:
5.0ug/ml; ELISA Titer: 1:1562500; Positive Control:
SP2/0 cell lysate