

Product datasheet for **TA331438**

Mafa Rabbit Polyclonal Antibody

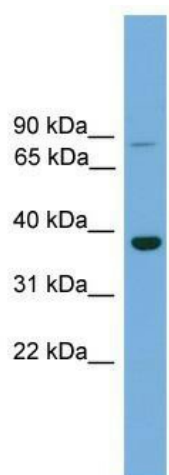
Product data:

Product Type:	Primary Antibodies
Applications:	WB
Recommended Dilution:	WB
Reactivity:	Mouse
Host:	Rabbit
Isotype:	IgG
Clonality:	Polyclonal
Immunogen:	The immunogen for anti-Mafa antibody: synthetic peptide corresponding to a region of Mouse. Synthetic peptide located within the following region: KLEVGRLAKERDLYKEKYEKLAGRGGPGGAGGAGFPREPSAQAGPAAK
Formulation:	Liquid. Purified antibody supplied in 1x PBS buffer with 0.09% (w/v) sodium azide and 2% sucrose. <i>Note that this product is shipped as lyophilized powder to China customers.</i>
Conjugation:	Unconjugated
Storage:	Store at -20°C as received.
Stability:	Stable for 12 months from date of receipt.
Predicted Protein Size:	37 kDa
Gene Name:	v-maf musculoaponeurotic fibrosarcoma oncogene family, protein A (avian)
Database Link:	NP_919331 Entrez Gene 378435 Mouse Q8CF90
Background:	Mafa acts as a transcriptional factor. Mafa specifically binds the insulin enhancer element RIPE3b. Mafa cooperates synergistically with NEUROD1 and PDX1. Phosphorylation by GSK3 increases its transcriptional activity and is required for its oncogenic activity. Mafa regulates the insulin gene transcription. Mafa is involved either as an oncogene or as a tumor suppressor, depending on the cell context.
Synonyms:	hMafA; RIPE3b1
Note:	Rat: 100%; Mouse: 100%; Human: 86%



[View online »](#)

Product images:



WB Suggested Anti-Mafa Antibody Titration: 0.2-1 ug/ml; ELISA Titer: 1:62500; Positive Control: Mouse Muscle