

Product datasheet for TA331434

Foxe1 Rabbit Polyclonal Antibody

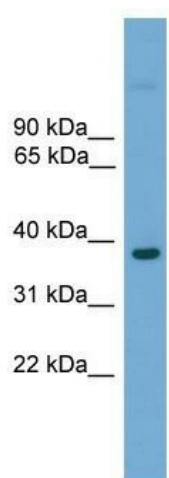
Product data:

Product Type:	Primary Antibodies
Applications:	WB
Recommended Dilution:	WB
Reactivity:	Mouse
Host:	Rabbit
Isotype:	IgG
Clonality:	Polyclonal
Immunogen:	The immunogen for anti-Foxe1 antibody: synthetic peptide corresponding to a region of Mouse. Synthetic peptide located within the following region: FYGRTSPGQFGAALGPCYNPGGQLGAGGGGAYHSRHATAYPGAVDRFVSA
Formulation:	Liquid. Purified antibody supplied in 1x PBS buffer with 0.09% (w/v) sodium azide and 2% sucrose. <i>Note that this product is shipped as lyophilized powder to China customers.</i>
Conjugation:	Unconjugated
Storage:	Store at -20°C as received.
Stability:	Stable for 12 months from date of receipt.
Predicted Protein Size:	38 kDa
Gene Name:	forkhead box E1
Database Link:	NP_899121 Entrez Gene 110805 Mouse Q8R2I0
Background:	Foxe1 is a probable transcription factor. Foxe1 could be involved in thyroid gland organogenesis.
Synonyms:	FKHL15; FOXE2; HFKH4; HFKL5; TITF2; TTF-2; TTF2
Note:	Rat: 100%; Mouse: 100%; Bovine: 86%; Pig: 79%; Rabbit: 79%; Guinea pig: 79%



[View online »](#)

Product images:



WB Suggested Anti-Foxe1 Antibody Titration: 0.2-1 ug/ml; Positive Control: Mouse liver