

## Product datasheet for **TA331433**

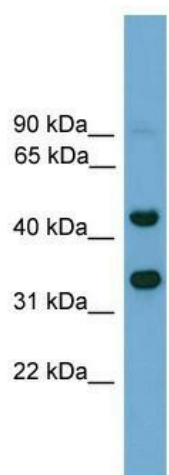
### Foxi2 Rabbit Polyclonal Antibody

#### Product data:

Product Type:	Primary Antibodies
Applications:	WB
Recommended Dilution:	WB
Reactivity:	Mouse
Host:	Rabbit
Isotype:	IgG
Clonality:	Polyclonal
Immunogen:	The immunogen for anti-Foxi2 antibody: synthetic peptide corresponding to a region of Mouse. Synthetic peptide located within the following region: AQAGGELDMAGFCDSLGSVPHGLTRAIAHPPSYGRTDLSSGRRLWVNS
Formulation:	Liquid. Purified antibody supplied in 1x PBS buffer with 0.09% (w/v) sodium azide and 2% sucrose.
Conjugation:	Unconjugated
Storage:	Store at -20°C as received.
Stability:	Stable for 12 months from date of receipt.
Predicted Protein Size:	34 kDa
Gene Name:	forkhead box I2
Database Link:	<a href="#">NP_899016</a> <a href="#">Entrez Gene 270004 Mouse</a> <a href="#">Q3I5G5</a>
Background:	The function of this protein remains unknown.
Synonyms:	FLJ46831
Note:	Mouse: 100%; Rat: 86%

[View online »](#)

## Product images:



WB Suggested Anti-Foxi2 Antibody Titration: 0.2-1 ug/ml; Positive Control: Mouse Brain