

## Product datasheet for **TA331430**

### Tppp Rabbit Polyclonal Antibody

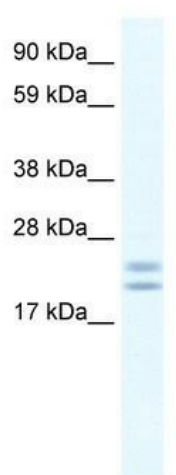
#### Product data:

|                         |   |
|-------------------------|---|
| Product Type:           | Primary Antibodies  |
| Applications:           | WB  |
| Recommended Dilution:   | WB  |
| Reactivity:             | Human   |
| Host:                   | Rabbit  |
| Isotype:                | IgG   |
| Clonality:              | Polyclonal  |
| Immunogen:              | The immunogen for anti-Tppp antibody: synthetic peptide directed towards the C terminal of mouse 2900041A09RIK. Synthetic peptide located within the following region:<br>KAVSSPTVSRLLDTSKFTGSHKERFDQSGKKGKAGRVLDVDESGYVPGY   |
| Formulation:            | Liquid. Purified antibody supplied in 1x PBS buffer with 0.09% (w/v) sodium azide and 2% sucrose.<br><i>Note that this product is shipped as lyophilized powder to China customers.</i>   |
| Conjugation:            | Unconjugated  |
| Storage:                | Store at -20°C as received.   |
| Stability:              | Stable for 12 months from date of receipt.  |
| Predicted Protein Size: | 24 kDa  |
| Gene Name:              | tubulin polymerization promoting protein  |
| Database Link:          | <a href="#">NP_878259</a><br><a href="#">Entrez Gene 11076 Human</a><br><a href="#">Q7TQD2</a>  |
| Background:             | This protein was disclosed by the RIKEN Mouse Gene Encyclopaedia Project, a systematic approach to determining the full coding potential of the mouse genome, involves collection and sequencing of full length complementary DNAs and physical mapping of the corresponding genes to the mouse genome. |
| Synonyms:               | p24; p25; p25-alpha; p25alpha; TPPP/p25; TPPP1  |
| Note:                   | Dog: 100%; Rat: 100%; Human: 100%; Mouse: 100%; Rabbit: 100%; Pig: 92%; Horse: 92%; Bovine: 85%   |



[View online »](#)

## Product images:



WB Suggested Anti-Tppp Antibody Titration:  
0.625ug/ml; ELISA Titer: 1:1562500; Positive  
Control: Human Frontal cortex