

Product datasheet for **TA331428**

GAS2L3 Rabbit Polyclonal Antibody

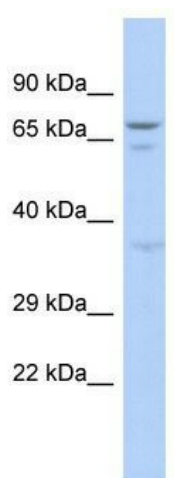
Product data:

Product Type:	Primary Antibodies
Applications:	WB
Recommended Dilution:	WB
Reactivity:	Human
Host:	Rabbit
Isotype:	IgG
Clonality:	Polyclonal
Immunogen:	The immunogen for Anti-GAS2L3 antibody is: synthetic peptide directed towards the N-terminal region of HUMAN GAS2L3. Synthetic peptide located within the following region: SISIPKSCCRHEELHEAVKHIAEDPPCSCSHRFSIEYLSEGRYRLGDKIL
Formulation:	Liquid. Purified antibody supplied in 1x PBS buffer with 0.09% (w/v) sodium azide and 2% sucrose.
Purification:	Affinity Purified
Conjugation:	Unconjugated
Storage:	Store at -20°C as received.
Stability:	Stable for 12 months from date of receipt.
Predicted Protein Size:	64 kDa
Gene Name:	growth arrest specific 2 like 3
Database Link:	NP_777602 Entrez Gene 283431 Human Q86X11
Background:	The function of this protein remains unknown.
Synonyms:	G2L3
Note:	Dog: 100%; Pig: 100%; Rat: 100%; Horse: 100%; Human: 100%; Mouse: 100%; Bovine: 100%; Rabbit: 100%; Guinea pig: 100%; Zebrafish: 85%



[View online »](#)

Product images:



Host: Rabbit; Target Name: GAS2L3; Sample
Tissue: 293T Whole Cell lysates; Antibody
Dilution: 1.0ug/ml