

## Product datasheet for **TA331426**

### FRMD3 Rabbit Polyclonal Antibody

#### Product data:

Product Type:	Primary Antibodies
Applications:	WB
Recommended Dilution:	WB
Reactivity:	Human
Host:	Rabbit
Isotype:	IgG
Clonality:	Polyclonal
Immunogen:	The immunogen for Anti-FRMD3 antibody is: synthetic peptide directed towards the N-terminal region of HUMAN FRMD3. Synthetic peptide located within the following region: GACIVQAE LGDYDPDEHPENYISEFEIFPKQSQKLERKIVEIHKNELRGQ
Formulation:	Liquid. Purified antibody supplied in 1x PBS buffer with 0.09% (w/v) sodium azide and 2% sucrose. <i>Note that this product is shipped as lyophilized powder to China customers.</i>
Purification:	Affinity Purified
Conjugation:	Unconjugated
Storage:	Store at -20°C as received.
Stability:	Stable for 12 months from date of receipt.
Predicted Protein Size:	60 kDa
Gene Name:	FERM domain containing 3
Database Link:	<a href="#">NP_777598</a> <a href="#">Entrez Gene 257019 Human A2A2Y4</a>
Background:	The protein encoded by this gene is a single pass membrane protein primarily found in ovaries. A similar protein in erythrocytes helps determine the shape of red blood cells, but the function of the encoded protein has not been determined. There is some evidence that this is a tumor suppressor gene, and there is also evidence linking defects in this gene to susceptibility to diabetic nephropathy in type 1 diabetes. Several transcript variants encoding different isoforms have been found for this gene.



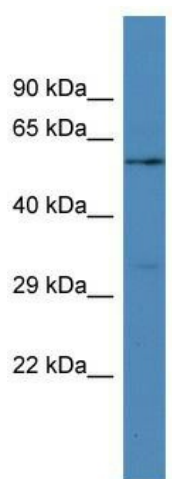
[View online »](#)

**Synonyms:** 4.1O; EPB41L4O; EPB41LO; P410

**Note:** Pig: 100%; Rat: 100%; Horse: 100%; Human: 100%; Mouse: 100%; Bovine: 100%; Rabbit: 100%; Dog: 93%; Guinea pig: 93%

**Protein Families:** Transmembrane

**Product images:**



Host: Rabbit; Target Name: FRMD3; Sample Tissue: Jurkat Whole Cell lysates; Antibody Dilution: 1.0ug/ml